

# NAPOLEON

ROGUE® SERIES

## GRILL DIFFERENT GO ROGUE.



ROGUE® SERIES

[napoleongrills.com](http://napoleongrills.com)



# GO ROGUE OR GO HOME.

- ✓ YOU VIEW PERFECT GRILL MARKS AS A BADGE OF HONOR.
- ✓ YOU THINK CUTTING INTO A STEAK TO CHECK DONENESS IS SACRILEGE.
- ✓ YOU KNOW WHEN AND WHY TO USE RUB VS. MARINADE VS. SAUCE.

That's why you are ready for a Napoleon grill. Napoleon takes the art of grilling to a higher level. Every feature, every material is engineered to give ultimate performance - so you can create unforgettable meals and memorable moments. And just like you, we're not some rookie behind the grill. Napoleon is a family-owned company with over 20 passionate years of grill-making experience. Every great meal starts with the best ingredients. Start yours with the best grill out there: Napoleon.

R425S1B  
Black Edition



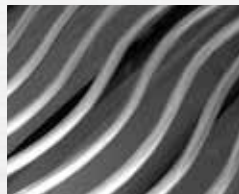
**365** 2 BURNERS  
**425** 3 BURNERS  
**525** 4 BURNERS



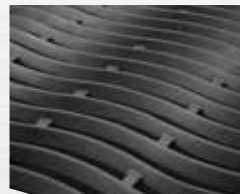
**Folding Side Shelves**  
 (ALL MODELS)



Dual-Level  
**Stainless Steel Sear Plates**



Stainless Steel  
**Iconic WAVE™**  
 Cooking Grids  
 (SIB MODELS)



Porcelainized Cast Iron  
**Iconic WAVE™**  
 Reversible Channel  
 Cooking Grids  
 (EXCLUDING SIB MODELS)



Range **Side Burner**  
 (SB MODELS)



Infrared  
**SIZZLE ZONE™**  
 Side Burner  
 (SIB MODELS)



# 365

## ROGUE

2 BURNERS



natural gas or propane  
up to **37k** btu's



zero to **1800°** exclusive infrared  
**SIZZLE ZONE** Technology  
Ready to Grill in **30** Seconds



deliciously serve  
up to **20** people



grill to perfection  
with up to **2** burners



### R365SIB

37,000 BTU's  
2 burners plus infrared  
**SIZZLE ZONE** side burner  
Cooking Area: 545 in<sup>2</sup>



45 Minute  
Assembly  
Time



### R365

28,000 BTU's  
2 burners  
Cooking Area: 460 in<sup>2</sup>



### R365SB

37,000 BTU's  
2 burners plus range side burner  
Cooking Area: 460 in<sup>2</sup>

## CHARCOAL FLAVOR FROM YOUR GAS GRILL

Napoleon's optional charcoal tray is designed to let you add the fun & flavor of charcoal anytime, on your gas grill. Simply replace sear plates with the charcoal tray, add charcoal and light with your gas burner.

# 425 ROGUE

3 BURNERS



## R425

36,000 BTU's

3 burners

Cooking Area: 535 in'



## R425SB

45,000 BTU's

3 burners plus  
range side burner

Cooking Area: 535 in'



## R425SIB

45,000 BTU's

3 burners plus infrared  
**SIZZLE ZONE™** side burner

Cooking Area: 625 in'

OPTIONAL  
DETACHABLE  
STORAGE  
BASKET

(Standard on R425SIB)



natural gas or propane  
up to **45k** btu's



zero to **1800°** exclusive infrared  
**SIZZLE ZONE™** Technology  
Ready to Grill in **30** Seconds



deliciously serve  
up to **26** people



grill to perfection  
with up to **3** burners



45 Minute  
Assembly  
Time

## R425SIB

Black Edition



## ACCU-PROBE™ TEMPERATURE GAUGE

Safely and instantly read the internal temperature of your grill with the lid closed. This thermometer has a wide temperature measurement range from 0° to 370°C (0° to 700°F) and includes the ideal smoking and searing range.



# 525

## ROGUE

4 BURNERS



natural gas or propane  
up to **57k** btu's



zero to **1800°** exclusive infrared  
**SIZZLE ZONE** Technology  
Ready to Grill in **30** Seconds



deliciously serve  
up to **31** people



grill to perfection  
with up to **4** burners



45 Minute  
Assembly  
Time

### R525

48,000 BTU's  
4 burners  
Cooking Area: 660 in<sup>2</sup>

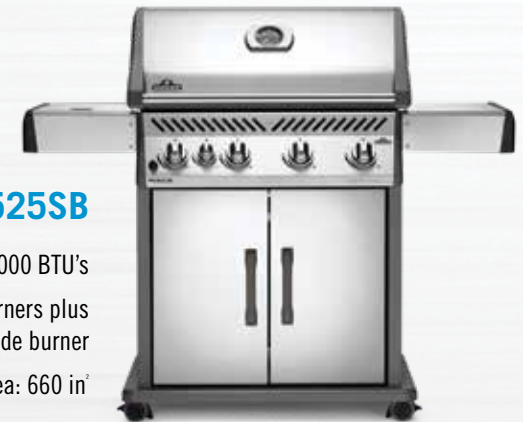


### R525SIB

57,000 BTU's  
4 burners plus infrared  
**SIZZLE ZONE** side burner  
Cooking Area: 745 in<sup>2</sup>

### R525SB

57,000 BTU's  
4 burners plus  
range side burner  
Cooking Area: 660 in<sup>2</sup>



## INSTANT JETFIRE™ IGNITION

Napoleon's **JETFIRE™** ignition starts each burner individually for reliable start ups - EVERY time.

# UPGRADE YOUR GRILLING ACCESSORIES



**Healthy Choice Starter Kit**  
90003



**Meat Tenderizer**  
55204



**Premium Cutting Board and Knife Set**  
70039



**Rectangular Baking Stone**  
70008



**8 Stainless Steel Skewers**  
70015



**Rotisserie Kits**



**Rotisserie Grill Basket**  
64000



**Wood Chip Starter Kit**  
67020



**Flexible Grill Basket**  
57012



**Cast Iron Charcoal / Smoker Tray**  
67732



**PRO Stainless Steel Rotating Skewer Rack**  
70014



**2 Piece Toolset**  
70032



# NAPOLEON - CELEBRATING OVER 40 YEARS OF HOME COMFORT PRODUCTS



24 Napoleon Rd., Barrie, Ontario, L4M 0G8  
103 Miller Drive, Crittenden, Kentucky, USA 41030  
7200 Trans Canada Highway, Montreal, Quebec H4T 1A3

PHONE: 866-820-8686  
napoleongrills.com  
grills@napoleonproducts.com

Approved by Intertek Testing Services to standards in the USA and Canada: ANSI Z21.58 / CSA 1.6 - Outdoor Cooking Gas Appliances. All specifications and designs are subject to change without prior notice due to ongoing product improvements. Consult your owner's manual for complete installation and operating instructions and check all local and national Building Codes and Regulations. Not all features available on all models. Napoleon is a registered trademark of Wolf Steel Group Inc. Images and colors may not be exactly as shown.

Authorized Dealer



Printed in Canada  
ADBRRG 05/2018