

NAPOLEON®

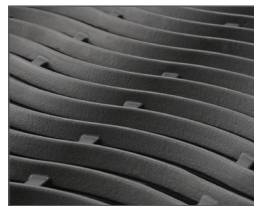
GRILLS



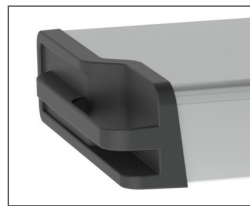
GAS GRILL LEGEND

Up to 48,000 BTU's
4 Burners
Cooking Area: 670 in²

LD485



Porcelainized Cast Iron
WAVE™ Cooking Grids



Integrated Condiment
Holders



ACCU-PROBE™
Temperature Gauge



JETFIRE™ Ignition System

- Four stainless steel tube burners and sear plates
- Porcelainized cast iron WAVE™ cooking grids
- Double walled stainless steel lid
- Stainless steel side shelves with integrated condiment holders
- JETFIRE™ ignition system

