

# Wood Burning





Shown with traditional painted black arched door and painted black upper and lower louvers.



Decorative door and louvers come standard in painted black.



Four stainless steel secondary air tubes generate a fascinating display of **YELLOW DANCING FLAMES**®.

## CZ26

### EPA Clean Burning Wood Fireplace

The CZ26 is installed as a zero clearance or as a masonry fireplace providing optimum heating efficiency, durability, environmentally clean burning and exceptional heat performance. Continental's advanced wood burning technology and heat retaining refractory liner, supports long overnight burns for added convenience and comfort.

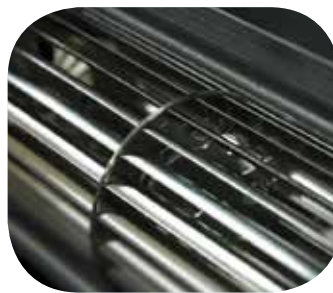




Shown with traditional painted black arched door and black flashing kit.

## CI-1402 EPA Clean Burning Wood Insert

The CI-1402 insert easily converts your existing, inefficient masonry fireplace with clean burning fires that radiate plenty of luxurious heat. By burning more efficiently, you save time and money which allows you to enjoy life with family and friends.



Features two WHISPER QUIET™ heat circulating blowers with automatic thermal switch.



Complete with surround and black trim.

# Accessories

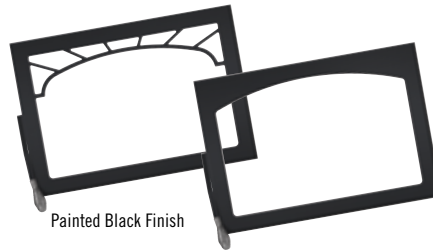
It's easy to update the look of your fireplace by simply changing the decorative accessories.

## Door Options

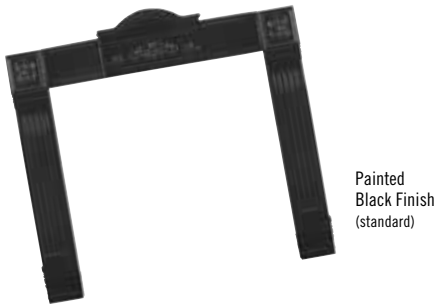
Webbed Arched & Arched  
Available for CI-1402.



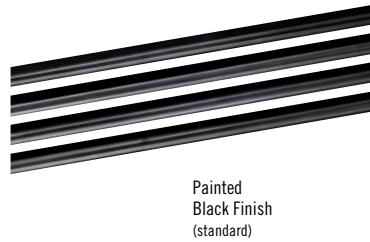
Webbed Arched & Arched  
Available for CZ26.



Cast Iron Surround Kits  
Available for CZ26 and CI-1402.

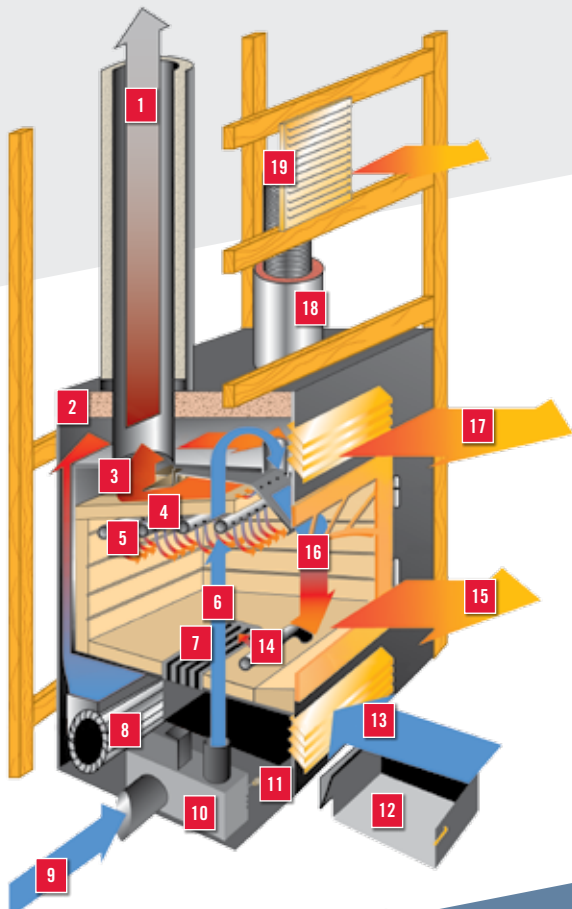


Louvers  
Standard for CZ26.



|  | CI-1402 | CZ26 |
|--|---------|------|
| Arched Door-<br>Available in Painted Black, Satin Chrome plated<br>and 24 Karat Gold plated finishes | 0       | 0*   |
| Webbed Door-<br>Standard in Painted Black  | -       | 0    |
| Louvers<br>Standard in Painted Black   | -       | 0    |
| Large Spring Handles<br>Available in Black, Brass and Satin Chrome<br>plated finishes                | 0       | 0    |
| Small Spring Handles<br>Available in Black, Brass and Satin Chrome<br>plated finishes                | 0       | -    |
| Cast Iron Surround Kits  | 0       | -    |
| Blower Kit   | S       | 0    |
| Ash Pan with Lid   | -       | S    |
| Hot Air Distribution Kit   | -       | 0    |

- = Not Available 0= Optional S= Standard  
\*Available in Black only



## Anatomy of a Clean Burning Wood Fireplace

- 1 Chimney - Combusted air exhausts out the chimney
- 2 Insulation
- 3 Exhaust Flow Prohibitor
- 4 PHAZER® Baffle
- 5 Secondary Air
- 6 Combustion Air To Firebox
- 7 Cast Iron Grate
- 8 Blower
- 9 Outside Combustion Air
- 10 Air Control Chamber
- 11 Single Lever Burn Control - A single air control regulates the burn rate
- 12 Ash Pan With Lid
- 13 Cool Room Air
- 14 Log Retainer & Bottom Primary Air
- 15 Radiant Heat
- 16 Airwash
- 17 Convection Air
- 18 Insulated Flex Pipe - Available for the CZ26
- 19 Hot Air Gravity Vent Option - The optional hot air gravity vent system may be used to distribute heat to an adjoining room (located either above, or beside the room containing the fireplace) Available for the CZ26

Innovative Hearth Solutions





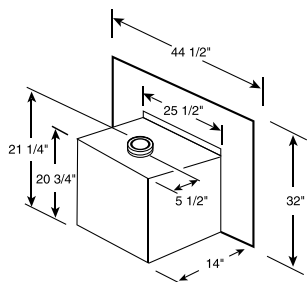


## CI-1402

### Features & Benefits

- Fully refractory lined firebox maintains the interior temperatures necessary to achieve low emissions and complete combustion
- Includes two "WHISPER QUIET" heat circulating blowers
- Secondary air tube, insulated with ceramic fibre and protected with a stainless steel cover plate, ensures complete combustion
- Complete with standard flashing/surround and trim to cover fireplace opening up to 32"H x 44 1/2"W
- Large viewing area through an elegantly arched cast iron door
- Standard arched doors available in painted black finish, satin chrome plated and 24 Karat gold plated
- Matching spring handles accompany door
- Effective air wash in combination with high temperatures keeps the viewing glass clean
- Economical 6" flue assures you of efficiency and cost saving installations
- Cool room air is circulated around the firebox, heated and returned to the room
- Non catalytic high tech design eliminates the need for a delicate ceramic catalytic combustor which can deteriorate over time
- The easy operation of a single lever burn control regulates primary and secondary air, establishing a perfect mixture and providing a clean burn
- Optional low clearance flue connector available
- Optional cast iron surround is available in painted black
- Backed by the President's Limited Lifetime Warranty

| CI-1402                               |                 |
|---------------------------------------|-----------------|
| <b>BTU's</b>                          |                 |
| Heat Output <sup>**</sup>             | 11,400 - 41,300 |
| Heat Output (High Burn <sup>†</sup> ) | 70,000          |
| <b>Firebox Capacity</b> (cu. ft.)     | 2.25            |
| <b>Area Heated</b> (sq. ft.)          | 800 - 2000+     |
| <b>Burn Time</b> (hrs.)               | 9               |
| <b>Log Size</b> (max.)                | 18"             |
| <b>Emissions</b> (grams/hour)         | 3.5             |
| <b>Mobile Home Approved</b>           | No              |
| <b>Blower Kit Available</b>           | Standard        |



Min. Fireplace Opening: 26"W x 22"H x 14"D  
Overall dimension with cast iron surround: 53 1/2"W x 32"H

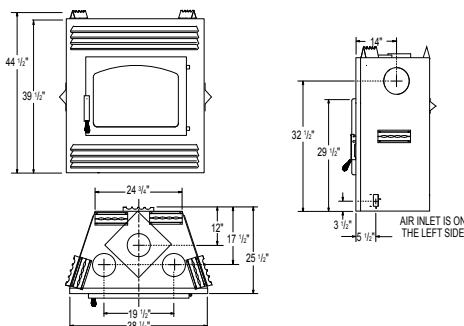


## CZ26

### Features & Benefits

- Full brick patterned refractory liner retains heat and supports overnight burn
- PHAZER<sup>®</sup> light weight ceramic baffle heats up quickly to help increase efficiency
- Four stainless steel secondary air tubes generate a clean and efficient burn as well as a fascinating flame display
- Air wash system, insulated with ceramic fibre and protected with a stainless steel cover plate, eliminates deterioration and assures complete combustion, maintaining an extremely clean viewing glass
- High-tech wood burning technology with an outside air option
- Convenient and elegant stainless steel log retainer and primary "bottom air feed" assists in cold start up and to recharge a small, dying fire
- Cast iron grate with self-closing ash dump comes standard
- Large "king size" ash pan quickly and easily lets you dispose of ashes
- Solid, heavy duty mig welded construction and high temperature ceramic glass withstand high temperatures and are built to last a lifetime
- Classic arched or webbed arched doors available in painted black
- Louvers come standard in painted black
- Backed by the President's Limited Lifetime Warranty

| CZ26                                  |                 |
|---------------------------------------|-----------------|
| <b>BTU's</b>                          |                 |
| Heat Output <sup>**</sup>             | 11,500 - 27,400 |
| Heat Output (High Burn <sup>†</sup> ) | 70,000          |
| <b>Firebox Capacity</b> (cu. ft.)     | 1.7             |
| <b>Area Heated</b> (sq. ft.)          | 2000            |
| <b>Burn Time</b> (hrs.)               | 9               |
| <b>Log Size</b> (max.)                | 18"             |
| <b>Emissions</b> (grams/hour)         | 5.4             |
| <b>Outside Air for Combustion</b>     | Yes             |
| <b>Mobile Home Approved</b>           | Yes             |
| <b>Central Heating Kit Available</b>  | Optional        |
| <b>Blower Kit Available</b>           | Optional        |



## Help Protect the Environment with a Continental<sup>®</sup> Wood Burning Fireplace or Insert

Carbon is an essential part of life on Earth. It plays an important role in the structure, biochemistry and nutrition of all living cells. Nature's cycle is an exchange of carbons between the atmosphere and vegetation, using the energy from the sun. Plants absorb the CO<sub>2</sub> from the atmosphere during photosynthesis, also called primary production, and release CO<sub>2</sub> back into the atmosphere during respiration.

How does this relate to wood burning? Trees (like any vegetation) absorb carbon dioxide from the air as they grow. When trees die from the natural aging process or are consumed in a forest fire, the carbon that is stored within the trees is again released into the air as carbon dioxide. This is the simplest form of nature's carbon cycle.

Heating your home with a Continental<sup>®</sup> high efficiency, EPA (Environmental Protection Agency) approved fireplace or insert releases no more carbon dioxide than a dying tree would lying on the forest floor. In fact, when the entire carbon cycle is considered, a Continental<sup>®</sup> EPA approved fireplace heats your home more efficiently and with less impact on the environment than any other heating fuel option.

When other fossil fuels such as coal, etc, are used to heat your home, run your car or power your appliances, old carbon that has been stored in the Earth's geosphere for millions of years is released into the atmosphere. This increasing compressed form of carbon dioxide is directly linked to global warming.

A Continental<sup>®</sup> EPA approved fireplace or insert does not contribute to this effect as no more carbon dioxide is released than would a dying tree from a natural forest.



Continental<sup>®</sup>, Helping to Protect the Environment.



\* Figures may vary with individual conditions such as floor plan layout, insulation value/heat loss of the house, geographical location and firewood used.  
 \*\* EPA (Environmental Protection Agency) rated BTU/h with softwood test fuel (for emissions only) - no refueling  
 \*\*\* Wolf Steel Ltd., own test results showing realistic BTU using hardwood logs with regular refueling. Heat output will differ on chimney draft as well as type, moisture content and size of wood. US only.  
 - Must be installed on a non-combustible floor protector extending 6" in front and both sides.



### QUALITY PROMISE

All Continental® products are built to the strictest quality standards and only the highest grade materials are used. The computerized production processes, pride in workmanship and serious commitment to our achieved ISO9001-2008 certification, ensure many years of dependable performance.

### MAXIMUM EFFICIENCY

All Continental® models are designed to maximize efficiency levels with special heat retaining components.

### CONVENIENCE

Continental® wood burning products offer state-of-the-art technology, completely utilizing the firebox chamber with a fully lined refractory system. The kiln-like atmosphere allows for an amazing all day or overnight burn. The single lever combustion control allows for simple regulation of the burn rate.

### A RELIABLE ECONOMICAL HEATING SOURCE

With a Continental® wood burning fireplace or insert, you can rely on comfort and heat when you need it most. No power? No problem! When the power goes out you can enjoy the reassurance of a warm and tranquil atmosphere.

### ENVIRONMENTALLY FRIENDLY

Continental® takes great pride in committing to provide environmentally friendly biomass products. Continental's wood burning technology exceeds EPA (Environmental Protection Agency) standards – burning clean with low emissions. From manufacturing processes to everyday business procedures, Continental® is taking a “going green” approach to help make a difference in keeping our environment safe.

### PROUDLY MADE IN NORTH AMERICA

Continental® products are manufactured in facilities throughout North America under the quality commitment of ISO9001-2008. Over 750 employees take great pride in designing products that provide the lifestyle you and your family deserve.

### OTHER PRODUCTS AVAILABLE

Other products available through your authorized Continental® dealer – the complete line of Timberwolf wood stoves and inserts and pellet stoves and inserts.



#### Tested to the following standards:

Continental® wood burning fireplaces and inserts are certified for emissions to EPA Phase 2 1990 and DEQ 1988 Standards and safety tested by Warnock Hersey to North American Standards, CSA B366.2, ULC S627, ULC S628 and UL 1482.  
CZ26 is safety tested and listed to Standards in Canada and the United States: ULC S610, ULC S627, UL 127 for zero clearance fireplaces and to S639 for solid fuel burning masonry fireplaces.  
CI-1402 is EPA approved to Phase 2 of the 1990 test Standards.

Installations shown may not be accurate to code. Consult your owner's manual for complete installation instructions and check all local and national building codes. All specifications and designs are subject to change without notice to allow for on-going product improvement. Images may not be exactly as shown. Actual enamel colours might be slightly different as shown in brochure. © Wolf Steel Ltd.



- 103 Miller Drive, Crittenden, Kentucky, USA 41030
- 24 Napoleon Road, Barrie, Ontario, Canada L4M 0G8
- 7200, Route Transcanadienne, Montréal, PQ, Canada, H4T 1A3

Tel: (705) 721-1212 Fax: (705) 722-6031  
continentalfireplaces.com



Authorized Dealer



ADBRC175- 01/2015