



# Fireplaces

Gas and Electric

[continentalfireplaces.com](http://continentalfireplaces.com)





Shown with MIRRO-FLAME™ Porcelain Reflective Radiant Panels.

# CB30 Gas Fireplace

The CB30 is the smallest option in the CB series and is a great choice when space is limited. With up to 15,000 BTU's and Continental's exclusive PHAZER® glowing log set, it provides plenty of cozy heat.



2" Trim Kit



Contemporary Front



3" Premium Bevelled Trim



Blower



MIRRO-FLAME™ Porcelain Reflective Radiant Panels



Digital Remotes



Shore Fire Kit



Mineral Rock Kit



Beach Fire Kit



Complete with Safety Barrier



Shown with MIRRO-FLAME™ Porcelain Reflective Radiant Panels.

## CB36 Gas Fireplace

This unit is so adaptable that it can be installed almost anywhere! The shallow depth, at less than 16" deep, allows for versatile installations where space is at a premium and is also ideal for corner applications. The clean face design of the CB36 maximizes the viewing area and ensures all the fine details of the hand painted PHAZER® log set and realistic flames are enjoyed by all who bask in its glow.



Blower



MIRRO-FLAME™ Porcelain Reflective Radiant Panels



Digital Remotes



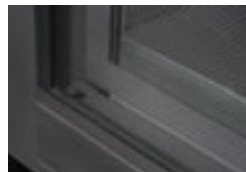
Shore Fire Kit



Mineral Rock Kit



Beach Fire Kit



Complete with Safety Barrier



2" Trim Kit



Clean Face Front



3" Premium Bevelled Trim



Contemporary Front





Shown with grey linear front, Beach Fire media kit and MIRRO-FLAME™ Porcelain Reflective Radiant Panels.

# CBL36

## Gas Fireplace

With a multitude of designer options, the linear design of the CBL36 can be dressed to match an existing room decor or can be stylized to be a focal point in your room. The CBL36 comes standard with an exclusive Topaz CRYSTALLINE™ ember bed that can be switched out to a completely new look and feel with the Shore Fire, Beach Fire and Mineral Rock kits which include a variety of rocks, sand, logs and vermiculite.



Blower



MIRRO-FLAME™ Porcelain Reflective Radiant Panels



Digital Remotes



Shore Fire Kit



Mineral Rock Kit



Beach Fire Kit



Safety Barrier Complete with Fronts



Black Classic 4-Sided Surround



Brushed Stainless Steel Premium 4-Sided Surround



Grey Linear Front



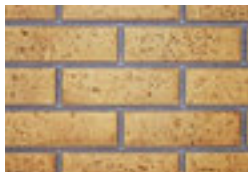
Shown with Contemporary decorative front, 2" trim kit and Sandstone decorative brick panels.

## CX36 Gas Fireplace

Continental's CX36 enhances the ambiance in any room with the industry's most realistic, exclusive PHAZER® log set and glowing ember bed. With select designer options the CX36 allows you to match your current home decor or create a beautiful focus point in any room. Up to 26,000 BTU's.



Blower



Decorative Sandstone Panels



MIRRO-FLAME® Porcelain Reflective Radiant Panels



Digital Remotes



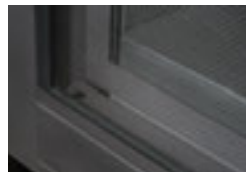
Shore Fire Kit



Mineral Rock Kit



Beach Fire Kit



Complete with Safety Barrier



2" Trim Kit



Clean Face Front



3" Premium Bevelled Trim



Contemporary Front



Shown with the Faceplate with Operable Screen Door and decorative Newport® brick panels.

# CX70

## Gas Fireplace

The CX70 offers you a wide range of heat output and control with a remarkable flame/heat adjustment. The PHAZERAMIC™ advanced burner technology with infrared ember bed produces stunning YELLOW DANCING FLAMES™. With a large viewing area, a realistic PHAZER™ log set that is rich in color and detail and the exclusive NIGHT LIGHT™, the CX70 is a one of a kind fireplace that you will be proud to have friends and family notice.



Blower (included)



MIRRO-FLAME™ Porcelain Reflective Radiant Panels



Proflame II Remote (included)



Decorative Newport® Panels



Decorative Old Town Red® Panels



Decorative Herringbone Panels



Complete with Safety Barrier



2" Trim



3" Premium Bevelled Trim



Heritage Front



Zen Front



Clean Face Front



Faceplate with Operable Screen Door





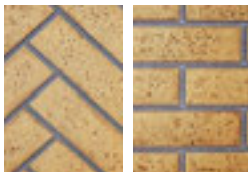
Shown with 2" trim kit.

## CB42 Gas Fireplace

Continental's 42" fireplace has up to 22,000 BTU's. With this large of a firebox the CB42 is the perfect addition to rooms where an aesthetically pleasing look and feel is wanted, but plenty of cozy heat is required. With a multitude of designer options the CB42 can virtually create any desired look for the room of your choosing.



Blower



Decorative Herringbone and Sandstone Panels



MIRRO-FLAME® Porcelain Reflective Radiant Panels



Digital Remotes



Shore Fire Kit



Mineral Rock Kit



Beach Fire Kit



Complete with Safety Barrier



2" Trim



3" Premium Bevelled Trim



Contemporary Front





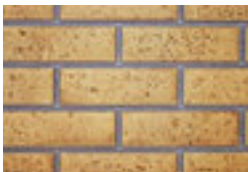
Shown with MIRRO-FLAME<sup>™</sup> Porcelain Reflective Radiant Panels

## CB46 Gas Fireplace

Continental's CB46 is now the largest single view fireplace in the CB Series and is offered as a 4" x 7" top and rear vent model. Offering a multitude of options with decorative fronts, trim kits, decorative brick panels and MIRRO-FLAME<sup>™</sup> Porcelain Reflective Radiant Panels, the CB46 can be designed to your personal taste and match any home decor. An approved safety barrier comes standard on the CB46.



Blower



Decorative Sandstone Panels



MIRRO-FLAME<sup>™</sup> Porcelain Reflective Radiant Panels



Digital Remotes



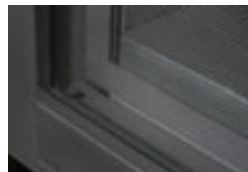
Shore Fire Kit



Mineral Rock Kit



Beach Fire Kit



Complete with Safety Barrier



Contemporary Front



3" Premium Bevelled Trim





CBHD4ST shown with exclusive PHAZER<sup>®</sup> glowing log set.  
 CBHD4P shown with Topaz CRYSTALINE<sup>™</sup> glass ember bed.

## CBHD4 Series - See Thru or Three Sided Peninsula Gas Fireplace

Continental's CBHD4 is available as a See Thru (CBHD4ST) or a three-sided (CBHD4P) Peninsula and features two different firebox/burner options, a log burner & a linear topaz glass burner (two different fireplace models). The CBHD4 series offers up to 30,000 BTU's, a massive 2,023 sq. in. viewing area, electronic ignition with a battery backup system with optional Designer Fire Art and decorative panels to match any room in your home.



Alternate Glass Media Kits & Glass Enhancement Kits - Six Colors Available  
 Blue, Amber, Black, Red, Clear. Topaz included.



Digital Remotes



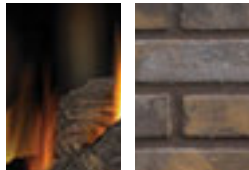
Mineral Rock Media Kit



Designer Fire Art  
 Nickel Stix



Designer Fire Art  
 Metal Coil



MIRRO-FLAME<sup>™</sup> Porcelain  
 Reflective Radiant Panels and  
 Decorative Newport<sup>™</sup> Panels



Complete with  
 Safety Barrier



Glass Ember Bed Burner



PHAZER<sup>®</sup> Log Set Burner



Glass Ember Bed Burner



PHAZER<sup>®</sup> Log Set Burner



Shown with standard clean face front, multi color river rocks and MIRROR-FLAME™ Porcelain Reflective Radiant Panels.

## BCDV36CF Gas Fireplace

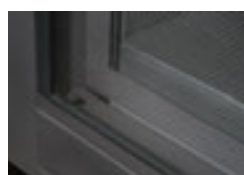
Continental's popular modern 36" fireplace is available as a clean face unit with a clear view of the firebox. The heat radiating glass, beautiful display of YELLOW DANCING FLAMES®, realistic PHAZER® log set, optional surrounds and decorative panels make it a perfect complement to a crisp, contemporary design with plenty of reliable, cozy heat. The perfect fireplace for those wanting a traditional look but a clean face contemporary design, the BCDV36CFSB gives you the best of both worlds.



Designer convex surround in luxurious Diamond Dust finish



Blower



Complete with Safety Barrier



Grey River Rocks



Multi-Color River Rocks



MIRROR-FLAME™ Porcelain Reflective Radiant Panels



Digital Remotes



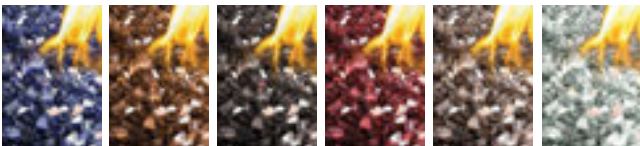
Standard Clean Face Front



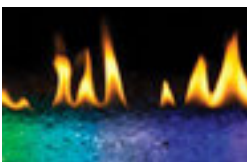
Shown with optional luxurious diamond dust convex surround and LED spectrum light strip set on blue.

## BCDV36CFG Gas Fireplace

It's crystal clear. A clean face design with an exclusive CRYSTALINE™ glass ember bed embraces Continental's collection of contemporary fireplaces. Standard with MIRRO-FLAME™ Porcelain Reflective Radiant Panels and a multi-function LED spectrum light strip, this fireplace provides inspiration to create a hearth experience that focuses on warmth, beauty and style.



Alternate Glass Media Kits & Glass Enhancement Kits - Six Colors Available  
Blue, Amber, Black, Red, Topaz, Clear included.



The LED spectrum light strip transitions through an array of colors based on an RGB color spectrum (included)



Blower



Complete with Safety Barrier



Digital Remotes



Designer convex surround in luxurious Diamond Dust finish





Shown with contemporary rectangular surround in painted black finish.

## CWHD31 Gas Fireplace

A modern gas fireplace that hangs on your wall. Ideal for modern and contemporary rooms, Continental's CWHD31 features easy installation plus all of the conveniences of a gas fireplace. Virtually endless installation possibilities, it's almost as easy as hanging a picture on the wall.



Alternate Glass Media Kits & Glass Enhancement Kits - Six Colors Available  
Blue, Amber, Black, Red, Clear, Topaz included.



Exclusive Slate Brick Panels  
Come Standard.



Low Voltage LED Lights



Digital Remotes



Rectangular Surround in Brushed  
Stainless Steel



Rectangular Surround in Painted Black



Shown with Classic Front in black and MIRRO-FLAME<sup>™</sup> porcelain reflective radiant panels.

## CHD35 Gas Fireplace

The simple yet sophisticated style of Continental's CHD35 fireplace provides every comfort you need to create a relaxing environment. The clean face design maximizes the glass area so the realistic flames and log set are enjoyed to their fullest. With up to 25,000 BTU's, the CHD35 generates plenty of cozy heat and can easily turn down to a lower, comfortable setting.



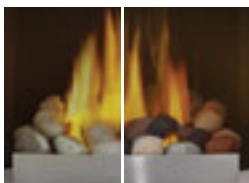
Decorative Sandstone and Porcelain Reflective Radiant Panels



Digital Remotes



Blower



River Rocks available in multi-color or grey with satin chrome rock fender



Mineral Rock Kit



Beach Fire Kit



Andirons  
Painted Black Finish



Classic Front in Black



Classic Front with Straight Accents



Classic Front with Curved Accents





Shown with Classic Front in black and MIRRO-FLAME™ porcelain reflective radiant panels.

## CHD40 Gas Fireplace

This mid-sized fireplace gives you all the great features of the CHD35 plus offers a wider 40" firebox width with 27,000 BTU's. Two distinct design choices - either a traditional PHAZER® log set which comes standard with the unit or the optional river rock media tray with satin chrome decorative fender that gives you a more contemporary fireplace experience.



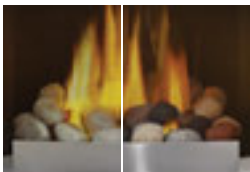
Decorative Sandstone and Porcelain Reflective Radiant Panels



Digital Remotes



Blower



River Rocks available in multi-color or grey with satin chrome rock fender



Mineral Rock Kit



Beach Fire Kit



Andirons  
Painted Black Finish



Classic Front in Black



Classic Front with Straight Accents



Classic Front with Curved Accents





Shown with Classic Front in black and Newport™ deluxe decorative brick panels.

## CHDX40-2 Gas Fireplace

Inspired by traditional masonry details and created with Continental's state-of-the-art gas fireplace technology, the deluxe CHDX40-2 offers the ultimate in performance and design. With 40,000 BTU's the flames will certainly impress any visitor. The clean face front allows a full view of the impressive 40" wide firebox with your choice of either fine detailed PHAZER® logs and charcoal embers or a river rock ember bed. A perfect investment for your lifestyle and your home.



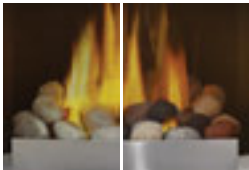
Decorative Sandstone, Newport™, Mayan Desert and Porcelain Reflective Radiant Panels



Proflame II Remote (included)



Blower



River Rocks available in multi-color or grey with satin chrome rock fender



Mineral Rock Kit



Beach Fire Kit



Andirons  
Painted Black Finish



Classic Front in Black



Classic Front with Straight Accents



Classic Front with Curved Accents



Shown with Classic Front in black and decorative Sandstone brick panels.

## CHD46 Gas Fireplace

The largest in the CHD series and offering up to 30,000 BTU's, the CHD46 provides a substantial focal point for any room. The impressive 46" wide firebox is completely filled with a realistic PHAZER® log set that is rich in color and detail. As with the other CHD fireplaces, you can choose the optional river rock media tray with satin chrome decorative fender to create a dramatic contemporary design element in your home.



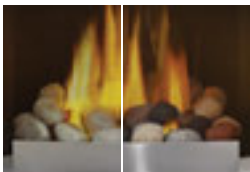
Decorative Sandstone and Porcelain Reflective Radiant Panels



Digital Remotes



Blower



River Rocks available in multi-color or grey with satin chrome rock fender



Mineral Rock Kit



Beach Fire Kit



Andirons  
Painted Black Finish



Classic Front



Classic Front with Straight Accents



Classic Front with Curved Accents



Shown with optional premium brushed stainless steel surround and MIRRO-FLAME™ Porcelain Reflective Radiant Panels.

## CLHD45 Linear Gas Fireplace

The CLHD45 provides a modern, linear design at an affordable price that pleases both new building and renovation budgets. With unique design options (colored glass and river rock media enhancement kit) & accessories the CLHD45 captures an extraordinary fireplace experience in any room. Perfect for contemporary and open concept rooms.



Alternate Glass Media Enhancement Kits - Six Colors Available  
Blue, Amber, Black, Red, Clear. Topaz included.



MIRRO-FLAME™ Porcelain  
Reflective Radiant Panels



Digital Remotes



Grey River Rock Media Kit



Multi-Color River Rock  
Media Kit



Driftwood Log Set & 6 Rocks



Blower



Linear Frame in grey



Premium 4-Sided Surround in brushed  
stainless steel



Deluxe 4-Sided Surround in gloss white



Deluxe 4-Sided Surround in gloss black



Basic 4-Sided Surround in flat black

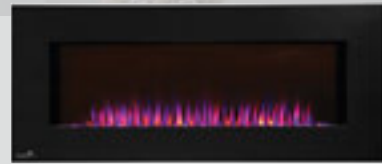




Shown with orange and blue mixed flame option.

## CEFL42H Electric Fireplace

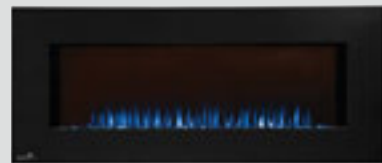
Continental's wall mount 42" linear electric fireplace is perfect for those wanting an aesthetically pleasing focal point in their room without the need for venting. The high power LED lights make it one of the brightest electrics available making it perfect for both night and day use. The CEFL42H features three different flame color settings which create a variety of looks to match or enhance any room in your home. The convenient wall hanging installation allows a quick and easy transformation of living rooms, bedrooms, kitchens, waiting rooms and offices.



Blue & Orange Mixed Flame Option



Orange Flame Option



Blue Flame Option



Paintable Cord Cover  
(included)



Remote Control  
(included)



Shown with orange flame option.

## CEFL50H Electric Fireplace

Continental's 50" linear electric fireplace can be partially recessed and is perfect for those wanting an aesthetically pleasing focal point in their room with out the need for venting. The high power LED lights make it one of the brightest electrics and can be used in day light or after dark. The CEFL50H feature three different flame color settings to match or enhance any room in your home, a generous glass front and a clear glass ember bed to complement the crisp, clean design. The convenient wall hanging installation allows a quick and easy transformation of living rooms, bedrooms, kitchens, waiting rooms and offices.



Blue & Orange Mixed Flame Option



Orange Flame Option



Blue Flame Option



Paintable Cord Cover  
(included)



Front Vents  
(included)



Remote Control  
(included)



Shown with painted black four-sided frame and MIRRO-FLAME™ Porcelain Reflective Radiant Panels.

## CEFV38H Electric Fireplace

Continental's new CEFV38H Vertical electric fireplace is a stunning statement piece for any small or large area without the need for venting. Never sacrifice your personal style again by giving yourself ample choices! Customize your CEFV38H electric fireplace by choosing from one of three color settings, for not only the CRYSTALINE™ ember bed but the back lit NIGHT LIGHT™ as well. Enjoy the convenience of a "Hang, Plug and Go" fireplace or choose a partially recessed installation for a sleeker low-profile look. Whatever you do, make sure to sit back, relax, remote in hand and enjoy the memories around your new CEFV38H Vertical electric fireplace.



Paintable Cord Cover (included)



Remote Control (included)



Emberbed and Backlit Lights Set on Pink



Emberbed and Backlit Lights Set on Orange



Emberbed and Backlit Lights Set on Blue



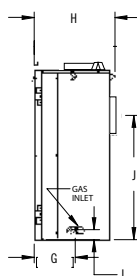
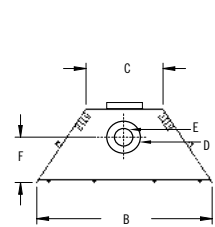
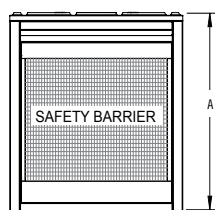


## CB30

### Features & Benefits

- 608 sq. in. glass area
- Available in standing pilot or electric ignition
- Fuel saving electronic ignition with battery backup system **\*standard on electric ignition fireplace\***
- Flex connector complete with shut off **\*standard on electric ignition fireplace\***
- Exclusive PHAZER™ log set and glowing ember bed
- Pan Style Burner
- Optional MIRRO-FLAME™ Porcelain Reflective Radiant Panels
- Optional on/off and digital hand held remote controls
- Optional two inch and three inch bevelled trim kits
- Optional Contemporary decorative front
- Optional fan kit
- Approved for bedrooms, bathrooms, bed sitting rooms and mobile homes
- Standard as Natural Gas with LP Kit optional
- Optional media enhancement kits include Beach Fire, Shore Fire and Mineral Rocks
- Power venting available to allow unique venting installations

|                              | CB30                   |
|------------------------------|------------------------|
| <b>BTU's (Input)</b>         | 15,000                 |
| <b>Venting</b>               | Top or Rear<br>4" & 7" |
| <b>Glass Type</b>            | Tempered               |
| <b>Glass Size</b>            |                        |
| Height                       | 23 11/16"              |
| Width                        | 25 11/16"              |
| <b>Efficiencies</b>          |                        |
| EnerGuide                    | 68.9%                  |
| AFUE                         | 72.5%                  |
| Steady State                 | -                      |
| <b>Mobile Home Certified</b> | Yes                    |



|      | A       | B   | C       | D       | E       | F      | G      | H   | I      | J       |
|------|---------|-----|---------|---------|---------|--------|--------|-----|--------|---------|
| CB30 | 34 1/4" | 30" | 12 3/4" | 7" DIA. | 4" DIA. | 8 1/4" | 6 1/4" | 14" | 1 1/4" | 24 3/4" |

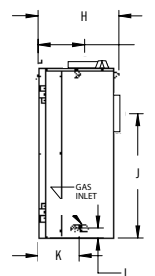
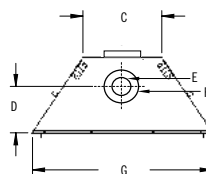
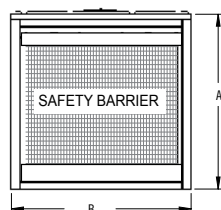


## CB36

### Features & Benefits

- 727 sq. in. glass area
- Available in standing pilot or electric ignition
- Fuel saving electronic ignition with battery backup system **\*standard on electric ignition fireplace\***
- Flex connector complete with shut off **\*standard on electric ignition fireplace\***
- Exclusive PHAZER™ log set and glowing ember bed
- Pan Style Burner
- Optional MIRRO-FLAME™ Porcelain Reflective Radiant Panels
- Optional on/off and digital hand held remote controls
- Optional contemporary decorative front
- Optional two inch and three inch bevelled trim kits
- Optional Contemporary decorative front
- Optional fan kit
- Approved for bedrooms, bathrooms, bed sitting rooms and mobile homes
- Standard as Natural Gas with LP Kit optional
- Optional media enhancement kits include Beach Fire, Shore Fire and Mineral Rocks
- Power venting available to allow unique venting installations

|                              | CB36                   |
|------------------------------|------------------------|
| <b>BTU's (Input)</b>         | 18,000                 |
| <b>Venting</b>               | Top or Rear<br>4" & 7" |
| <b>Glass Type</b>            | Tempered               |
| <b>Glass Size</b>            |                        |
| Height                       | 23 11/16"              |
| Width                        | 30 11/16"              |
| <b>Efficiencies</b>          |                        |
| EnerGuide                    | 74.5%                  |
| AFUE                         | 76.3%                  |
| Steady State                 | -                      |
| <b>Mobile Home Certified</b> | Yes                    |



|      | A       | B   | C       | D      | E       | F       | G   | H       | I      | J   | K  | L      |
|------|---------|-----|---------|--------|---------|---------|-----|---------|--------|-----|----|--------|
| CB36 | 34 1/4" | 35" | 15 3/8" | 9 1/2" | 4" DIA. | 7" DIA. | 35" | 15 3/4" | 9 1/2" | 24" | 8" | 1 1/4" |

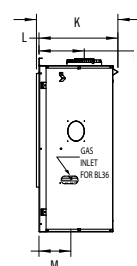
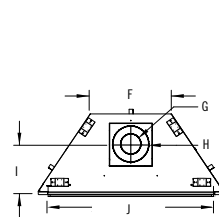
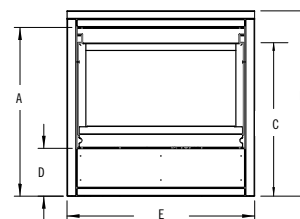


## CBL36

### Features & Benefits

- 515 sq. in. glass area
- Fuel saving electronic ignition with battery backup system and flex connector complete with shut off **\*standard\***
- Exclusive topaz CRYSTALINE™ ember bed **\*standard\***
- Tube Style Burner
- Optional MIRRO-FLAME™ Porcelain Reflective Radiant Panels
- Optional on/off and digital hand held remote controls
- Three optional decorative fronts with Safety Barriers
- Optional fan kit
- Approved for bedrooms, bathrooms, bed sitting rooms and mobile homes
- Available in natural gas or propane (LP)
- Optional media enhancement kits include Beach Fire, Shore Fire and Mineral Rocks
- Power venting available to allow unique venting installations

|                              | CBL36          |
|------------------------------|----------------|
| <b>BTU's (Input)</b>         | 16,000         |
| <b>Venting</b>               | Top<br>4" & 7" |
| <b>Glass Type</b>            | Tempered       |
| <b>Glass Size</b>            |                |
| Height                       | 16 3/4"        |
| Width                        | 30 3/4"        |
| <b>Efficiencies</b>          |                |
| EnerGuide                    | 65.65%         |
| AFUE                         | -              |
| Steady State                 | -              |
| <b>Mobile Home Certified</b> | Yes            |



|       | A       | B       | C       | D      | E   | F       | G      | H      | I      | J       | K       | L       | M      | N      |
|-------|---------|---------|---------|--------|-----|---------|--------|--------|--------|---------|---------|---------|--------|--------|
| CBL36 | 31 1/2" | 34 1/2" | 32 1/4" | 8 1/4" | 35" | 15 1/4" | 4" DIA | 7" DIA | 9 1/4" | 31 1/4" | 16 1/4" | 15 1/4" | 9 1/4" | 6 1/4" |



## CX36

### Features & Benefits

- 727 sq. in. glass area
- Available in standing pilot or electric ignition
- Fuel saving electronic ignition with battery backup system **\*standard on electric ignition fireplace\***
- Flex connector complete with shut off **\*standard on electric ignition fireplace\***
- Exclusive PHAZER<sup>®</sup> log set and glowing ember bed
- Pan Style Burner
- Optional Sandstone brick panels or MIRRO-FLAME<sup>™</sup> Porcelain Reflective Radiant Panels
- Optional on/off and digital hand held remote controls
- Optional contemporary decorative front
- Optional two inch and three inch bevelled trim kits
- Optional fan kit
- Approved for bedrooms, bathrooms, bed sitting rooms and mobile homes
- Standard as Natural Gas with LP Kit optional
- Optional media enhancement kits include Beach Fire, Shore Fire and Mineral Rocks
- Power venting available to allow unique venting installations

|                              | CX36                   |
|------------------------------|------------------------|
| <b>BTU's (Input)</b>         | 26,000                 |
| <b>Venting</b>               | Top or Rear<br>4" & 7" |
| <b>Glass Type</b>            | Ceramic                |
| <b>Glass Size</b>            |                        |
| Height                       | 23 11/16"              |
| Width                        | 30 11/16"              |
| <b>Efficiencies</b>          |                        |
| EnerGuide                    | 70.1%                  |
| AFUE                         | 73.8%                  |
| Steady State                 | -                      |
| <b>Mobile Home Certified</b> | Yes                    |

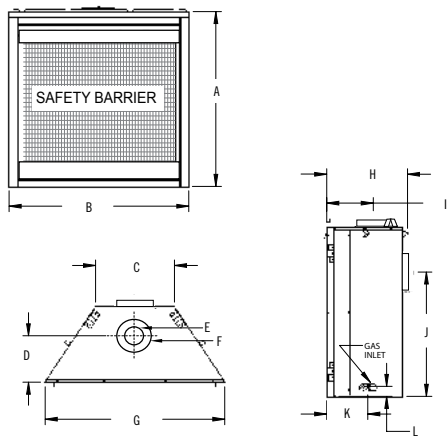


## CX70

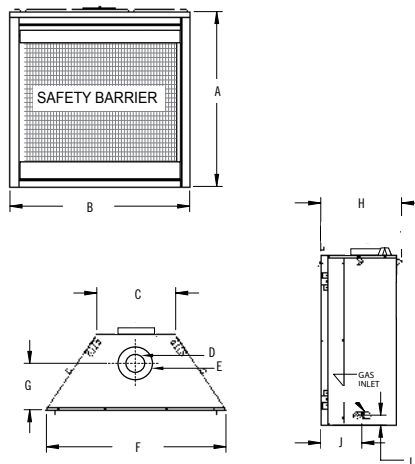
### Features & Benefits

- 727 sq. in. glass area
- Fuel saving electronic ignition with battery backup system and flex connector complete with shut off **\*standard\***
- Exclusive PHAZER<sup>®</sup> log set and glowing ember bed
- PHAZERAMIC<sup>™</sup> Burner
- Optional Newport<sup>™</sup>, Herringbone and Old Town Red<sup>™</sup> brick panels or MIRRO-FLAME<sup>™</sup> Porcelain Reflective Radiant Panels
- Proflame II hand held remote control (controls flame, NIGHT LIGHT<sup>™</sup> dimmer and blower) **\*standard\***
- Optional Heritage, Zen of Clean Face decorative fronts
- Optional black faceplate with operable screen doors
- Optional two inch and three inch bevelled trim kits
- Fan kit **\*standard\***
- Approved for bedrooms, bathrooms, bed sitting rooms and mobile homes
- Available in natural gas or propane (LP)
- Power venting available to allow unique venting installations

|                              | CX70           |
|------------------------------|----------------|
| <b>BTU's (Input)</b>         | 35,000         |
| <b>Venting</b>               | Top<br>5" & 8" |
| <b>Glass Type</b>            | Ceramic        |
| <b>Glass Size</b>            |                |
| Height                       | 23 11/16"      |
| Width                        | 30 11/16"      |
| <b>Efficiencies</b>          |                |
| EnerGuide                    | 72%            |
| AFUE                         | 74.6%          |
| Steady State                 | -              |
| <b>Mobile Home Certified</b> | Yes            |



|      | A       | B   | C       | D      | E       | F        | G   | H       | I      | J   | K  | L      |
|------|---------|-----|---------|--------|---------|----------|-----|---------|--------|-----|----|--------|
| CX36 | 34 1/4" | 35" | 15 3/4" | 9 1/4" | 4" DIA. | 7" DIA.* | 35" | 15 3/4" | 9 1/4" | 24" | 8" | 1 1/4" |



|      | A       | B   | C       | D       | E       | F   | G       | H       | I      | J      |
|------|---------|-----|---------|---------|---------|-----|---------|---------|--------|--------|
| CX70 | 34 1/4" | 35" | 11 1/4" | 5" DIA. | 8" DIA. | 35" | 11 1/4" | 18 1/4" | 1 1/4" | 7 3/4" |

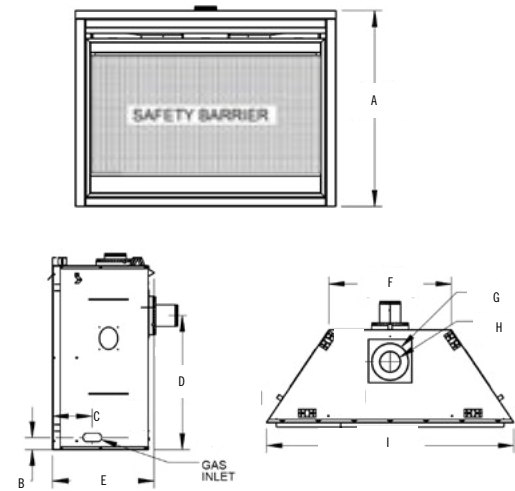


## CB42

### Features & Benefits

- 893 sq. in. glass area
- Available in standing pilot or electric ignition
- Fuel saving electronic ignition with battery backup system **\*standard on electric ignition fireplace\***
- Flex connector complete with shut off **\*standard on electric ignition fireplace\***
- Exclusive PHAZER<sup>®</sup> log set and glowing ember bed
- Pan Style Burner
- Optional Sandstone brick panels, Herringbone brick panels or MIRRO-FLAME<sup>™</sup> Porcelain Reflective Radiant Panels
- Optional on/off and digital hand held remote controls
- Optional contemporary decorative front
- Optional two inch and three inch bevelled trim kits
- Optional fan kit
- Approved for bedrooms, bathrooms, bed sitting rooms and mobile homes
- Standard as Natural Gas with LP Kit optional
- Optional media enhancement kits include Beach Fire, Shore Fire and Mineral Rocks
- Power venting available to allow unique venting installations

|                              | CB42                   |
|------------------------------|------------------------|
| <b>BTU's (Input)</b>         | 22,000                 |
| <b>Venting</b>               | Top or Rear<br>4" & 7" |
| <b>Glass Type</b>            | Tempered               |
| <b>Glass Size</b>            |                        |
| Height                       | 23 11/16"              |
| Width                        | 37 11/16"              |
| <b>Efficiencies</b>          |                        |
| EnerGuide                    | 73.3%                  |
| AFUE                         | -                      |
| Steady State                 | -                      |
| <b>Mobile Home Certified</b> | Yes                    |



|      | A       | B      | C      | D       | E       | F       | G       | H       | I   |
|------|---------|--------|--------|---------|---------|---------|---------|---------|-----|
| CB42 | 34 1/2" | 2 3/4" | 7 3/4" | 24 1/4" | 18 1/4" | 18 1/4" | 7" DIA. | 4" DIA. | 42" |

\*Vent free not approved in Canada and some States. Figures may vary with individual conditions such as floor plan layout, insulation value/heat loss of the house and geographical location. Consult your owner's manual for complete and up-to-date installation instructions and proper clearances to combustible materials.

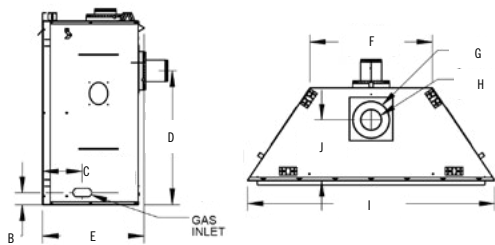


## CB46

### Features & Benefits

- 988 sq. in. glass area
- Available in standing pilot or electric ignition
- Fuel saving electronic ignition with battery backup system **\*standard on electric ignition fireplace\***
- Flex connector complete with shut off **\*standard on electric ignition fireplace\***
- Exclusive PHAZER® log set and glowing ember bed
- Pan Style Burner
- Optional Sandstone brick panels or MIRRO-FLAME™ Porcelain Reflective Radiant Panels
- Optional on/off and digital hand held remote controls
- Optional contemporary decorative front
- Optional two inch and three inch bevelled trim kits
- Optional fan kit
- Approved for bedrooms, bathrooms, bed sitting rooms and mobile homes
- Available in natural gas or propane (LP)
- Optional media enhancement kits include Beach Fire, Shore Fire and Mineral Rocks
- Power venting available to allow unique venting installations

|                              | CB46                   |
|------------------------------|------------------------|
| <b>BTU's (Input)</b>         | 22,000                 |
| <b>Venting</b>               | Top or Rear<br>4" & 7" |
| <b>Glass Type</b>            | Tempered               |
| <b>Glass Size</b>            |                        |
| Height                       | 23 11/16"              |
| Width                        | 41 11/16"              |
| <b>Efficiencies</b>          |                        |
| EnerGuide                    | 73.3%                  |
| AFUE                         | -                      |
| Steady State                 | -                      |
| <b>Mobile Home Certified</b> | Yes                    |



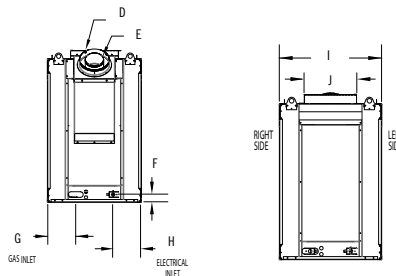
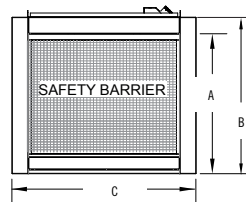
|      | A       | B      | C      | D       | E       | F       | G       | H       | I   | J       |
|------|---------|--------|--------|---------|---------|---------|---------|---------|-----|---------|
| CB46 | 34 3/8" | 2 3/8" | 7 3/8" | 24 1/4" | 18 3/8" | 22 3/4" | 7" DIA. | 4" DIA. | 46" | 11 1/2" |

## CBHD4ST

### Features & Benefits

- 2,023 sq. in. glass area
- Fuel saving electronic ignition with battery backup system and flex connector complete with shut off **\*standard\***
- Choice between PHAZER® glowing log set or exclusive topaz glass ember bed
- Optional Newport™ panels or MIRRO-FLAME™ Porcelain Reflective Radiant Panels
- Media enhancement kits of colored glass (black, blue, red, amber, clear, topaz) are designed to enhance the glass ember bed
- Optional designer fire art including Nickel Stix and Metal Coil
- Optional on/off and digital hand held remote controls
- Optional remote control with regulator (controls flame)
- Approved for bedrooms, bathrooms, bed sitting rooms and mobile homes
- Standard as Natural Gas with LP Kit optional

|                              | CBHD4ST        |
|------------------------------|----------------|
| <b>BTU's (Input)</b>         | 30,000         |
| <b>Venting</b>               | 45°<br>5" & 8" |
| <b>Glass Type</b>            | Tempered       |
| <b>Glass Size</b>            |                |
| Height                       | 28 1/2"        |
| Width                        | 35 1/2"        |
| <b>Efficiencies</b>          |                |
| EnerGuide                    | 67.9%          |
| AFUE                         | 66.98%         |
| Steady State                 | 69.3%          |
| <b>Mobile Home Certified</b> | Yes            |



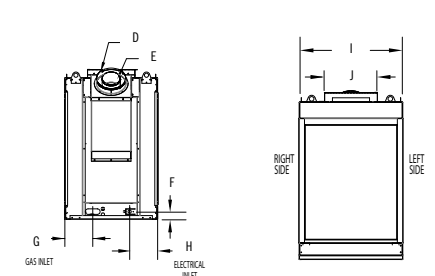
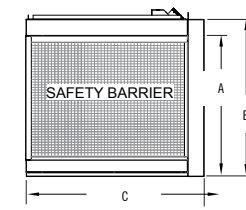
|        | A       | B       | C   | D       | E       | F      | G      | H      | I       | J         |
|--------|---------|---------|-----|---------|---------|--------|--------|--------|---------|-----------|
| BHD4ST | 34 3/8" | 38 1/4" | 45" | 8" DIA. | 5" DIA. | 2 1/8" | 7 3/8" | 7 3/8" | 25 1/4" | 12 13/16" |

## CBHD4P

### Features & Benefits

- 2,484 sq. in. glass area
- Fuel saving electronic ignition with battery backup system and flex connector complete with shut off **\*standard\***
- Choice between PHAZER® glowing log set or exclusive topaz glass ember bed
- Optional Newport™ panels or MIRRO-FLAME™ Porcelain Reflective Radiant Panels
- Media enhancement kits of colored glass (black, blue, red, amber, clear, topaz) are designed to enhance the glass ember bed
- Optional designer fire art including Nickel Stix and Metal Coil
- Optional on/off and digital hand held remote controls
- Optional remote control with regulator (controls flame)
- Approved for bedrooms, bathrooms, bed sitting rooms and mobile homes
- Standard as Natural Gas with LP Kit optional

|                              | CBHD4P            |            |
|------------------------------|-------------------|------------|
| <b>BTU's (Input)</b>         | 30,000            |            |
| <b>Venting</b>               | 45°<br>5" & 8"    |            |
| <b>Glass Type</b>            | Tempered          |            |
| <b>Glass Size</b>            | <b>Front/Back</b> | <b>End</b> |
| Height                       | 28 1/2"           | 27 1/8"    |
| Width                        | 35 1/2"           | 17"        |
| <b>Efficiencies</b>          |                   |            |
| EnerGuide                    | 67.9%             |            |
| AFUE                         | 66.98%            |            |
| Steady State                 | 69.3%             |            |
| <b>Mobile Home Certified</b> | Yes               |            |



|       | A       | B       | C       | D       | E       | F      | G      | H      | I       | J         |
|-------|---------|---------|---------|---------|---------|--------|--------|--------|---------|-----------|
| BHD4P | 34 3/8" | 38 1/4" | 43 1/4" | 8" DIA. | 5" DIA. | 2 1/8" | 7 3/8" | 7 3/8" | 25 1/4" | 12 13/16" |

\*Vent free not approved in Canada and some States. Figures may vary with individual conditions such as floor plan layout, insulation value/heat loss of the house and geographical location. Consult your owner's manual for complete and up-to-date installation instructions and proper clearances to combustible materials.



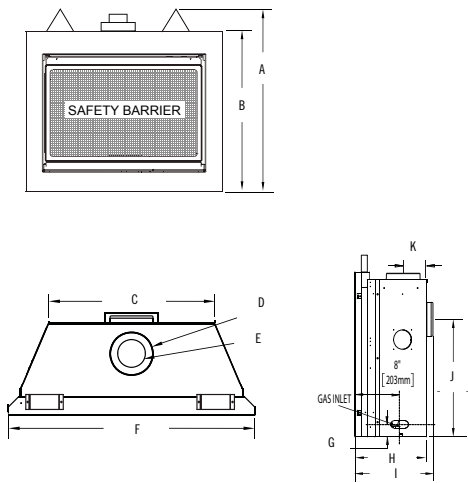


## BCDV36CFNTRSB

### Features & Benefits

- 594 sq. in. glass area
- Available in standing pilot or electric ignition
- Fuel saving electronic ignition with battery backup system **\*standard on electric ignition fireplace\***
- Flex connector complete with shut off **\*standard on electric ignition fireplace\***
- Exclusive PHAZER™ log set with embers comes standard
- Optional MIRRO-FLAME™ Porcelain Reflective Radiant Panels
- River rocks available in grey and multi-color to replace the log set for a different look
- Optional designer convex surround in diamond dust
- Optional on/off and digital hand held remote controls
- Optional fan kit
- Approved for bedrooms, bathrooms, bed sitting rooms and mobile homes
- Available in natural gas or propane (LP)

|                              | BCDV36CF               |
|------------------------------|------------------------|
| <b>BTU's (Input)</b>         | 17,000                 |
| <b>Venting</b>               | Top or Rear<br>4" & 7" |
| <b>Glass Type</b>            | Tempered               |
| <b>Glass Size</b>            |                        |
| Height                       | 19"                    |
| Width                        | 31 1/4"                |
| <b>Efficiencies</b>          |                        |
| EnerGuide                    | 72.6%                  |
| AFUE                         | 53%                    |
| Steady State                 | 64%                    |
| <b>Mobile Home Certified</b> | Yes                    |



|          | A       | B   | C   | D      | E      | F   | G  | H   | I   | J       | K  |
|----------|---------|-----|-----|--------|--------|-----|----|-----|-----|---------|----|
| BCDV36CF | 38 1/2" | 34" | 27" | 7" DIA | 4" DIA | 40" | 3" | 15" | 17" | 24 1/4" | 5" |

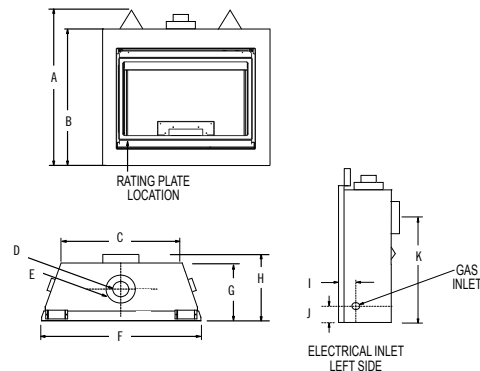


## BCDV36CFG-2

### Features & Benefits

- 594 sq. in. glass area
- Fuel saving electronic ignition with battery backup system and flex connector complete with shut off **\*standard\***
- Clean face front with easy access compartment door
- Sparkling CRYSTALINE™ ember bed **\*standard\***
- LED light strip based on an RGB color spectrum transitions between colors or can be set to the color of your choice, including white
- MIRRO-FLAME™ Porcelain Reflective Radiant Panels come standard
- Optional designer convex surround in diamond dust
- Optional on/off and digital hand held remote controls
- Optional fan kit
- Approved for bedrooms, bathrooms, bed sitting rooms and mobile homes
- Standard as Natural Gas with LP Kit optional

|                              | BCDV36CFG              |
|------------------------------|------------------------|
| <b>BTU's (Input)</b>         | 17,000                 |
| <b>Venting</b>               | Top or Rear<br>4" & 7" |
| <b>Glass Type</b>            | Tempered               |
| <b>Glass Size</b>            |                        |
| Height                       | 19"                    |
| Width                        | 31 1/4"                |
| <b>Efficiencies</b>          |                        |
| EnerGuide                    | 59.4%                  |
| AFUE                         | 53%                    |
| Steady State                 | 64%                    |
| <b>Mobile Home Certified</b> | Yes                    |



|           | A       | B   | C   | D      | E      | F   | G   | H   | I      | J  | K       | L   |
|-----------|---------|-----|-----|--------|--------|-----|-----|-----|--------|----|---------|-----|
| BCDV36CFG | 38 1/2" | 34" | 27" | 4" DIA | 7" DIA | 40" | 15" | 17" | 5 1/2" | 3" | 24 1/4" | 33" |

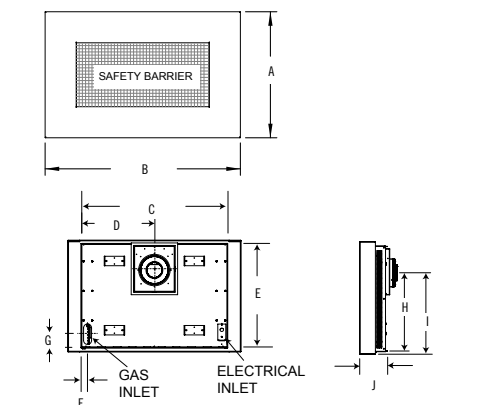


## CWHD31

### Features & Benefits

- 520 sq. in. glass area
- Fuel saving electronic ignition with battery backup system and flex connector complete with shut off **\*standard\***
- Clean, contemporary design
- Exclusive Topaz CRYSTALINE™ ember bed **\*standard\***
- 20" rigid venting included with unit
- Rectangular surrounds available in painted black and brushed stainless steel finishes
- Easily hangs on the wall and comes complete with wall mounting brackets (mounting screws not supplied)
- Optional on/off and digital hand held remote controls
- Optional LED light kit (two)
- Approved for bedrooms, bathrooms, bed sitting rooms and mobile homes
- Standard as Natural Gas with LP Kit optional

|                              | CWHD31          |
|------------------------------|-----------------|
| <b>BTU's (Input)</b>         | 20,000          |
| <b>Venting</b>               | Rear<br>4" & 7" |
| <b>Glass Type</b>            | Ceramic         |
| <b>Glass Size</b>            |                 |
| Height                       | 16 1/2"         |
| Width                        | 31 1/2"         |
| <b>Efficiencies</b>          |                 |
| EnerGuide                    | 65.2%           |
| AFUE                         | 68.62%          |
| Steady State                 | 68.9%           |
| <b>Mobile Home Certified</b> | Yes             |



|        | A   | B       | C       | D       | E   | F      | G      | H       | I       | J      |
|--------|-----|---------|---------|---------|-----|--------|--------|---------|---------|--------|
| CWHD31 | 28" | 43 1/2" | 36 1/2" | 18 1/2" | 27" | 1 1/2" | 3 1/2" | 20 1/4" | 20 1/4" | 8 1/2" |

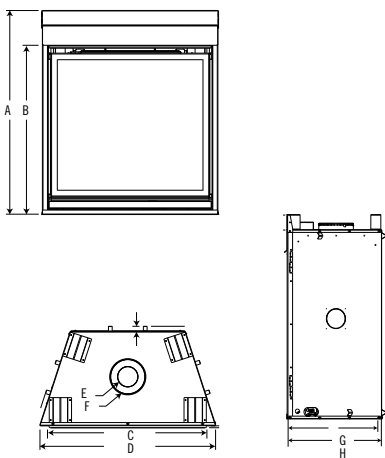


## CHD35

### Features & Benefits

- 879 sq. in. glass area
- 43% flame/heat adjustment for maximum comfort and efficiency
- Fuel saving electronic ignition with battery backup system and flex connector complete with shut off **\*standard\***
- Exclusive PHAZER™ glowing log set with charcoal and glowing embers can be switched out with the optional river rock media tray
- Optional decorative fronts available
- Optional Sandstone brick panels or MIRRO-FLAME™ Porcelain Reflective Radiant Panels
- Optional on/off and digital hand held remote controls
- Optional fan kit
- Approved for bedrooms, bathrooms, bed sitting rooms and mobile homes
- Standard as Natural Gas with LP Kit optional
- Optional media enhancement kits include Beach Fire and Mineral Rocks
- Power venting available to allow unique venting installations

|                              | CHD35          |
|------------------------------|----------------|
| <b>BTU's (Input)</b>         | 25,000         |
| <b>Venting</b>               | Top<br>4" & 7" |
| <b>Glass Type</b>            | Tempered       |
| <b>Glass Size</b>            |                |
| Height                       | 28 1/8"        |
| Width                        | 31 1/4"        |
| <b>Efficiencies</b>          |                |
| EnerGuide                    | 63.3%          |
| AFUE                         | 64.4%          |
| Steady State                 | 82.1%          |
| <b>Mobile Home Certified</b> | Yes            |



|       | A   | B       | C   | D       | E       | F       | G   | H       |
|-------|-----|---------|-----|---------|---------|---------|-----|---------|
| CHD35 | 41" | 33 3/4" | 23" | 35 3/4" | 4" DIA. | 7" DIA. | 20" | 20 3/4" |

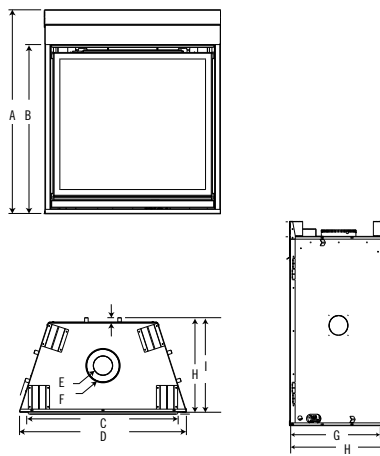


## CHD40

### Features & Benefits

- 1008 sq. in. glass area
- 43% flame/heat adjustment for maximum comfort and efficiency
- Fuel saving electronic ignition with battery backup system and flex connector complete with shut off **\*standard\***
- Exclusive PHAZER™ glowing log set with charcoal and glowing embers can be switched out with the optional river rock media tray
- Optional decorative fronts available
- Optional Sandstone brick panels or MIRRO-FLAME™ Porcelain Reflective Radiant Panels
- Optional on/off and digital hand held remote controls
- Optional fan kit
- Approved for bedrooms, bathrooms, bed sitting rooms and mobile homes
- Standard as Natural Gas with LP Kit optional
- Optional media enhancement kits include Beach Fire and Mineral Rocks
- Power venting available to allow unique venting installations

|                              | CHD40          |
|------------------------------|----------------|
| <b>BTU's (Input)</b>         | 27,000         |
| <b>Venting</b>               | Top<br>4" & 7" |
| <b>Glass Type</b>            | Tempered       |
| <b>Glass Size</b>            |                |
| Height                       | 28"            |
| Width                        | 36"            |
| <b>Efficiencies</b>          |                |
| EnerGuide                    | 64.3%          |
| AFUE                         | 65.6%          |
| Steady State                 | 76.3%          |
| <b>Mobile Home Certified</b> | Yes            |



|       | A   | B       | C   | D       | E       | F       | G   | H       |
|-------|-----|---------|-----|---------|---------|---------|-----|---------|
| CHD40 | 41" | 33 3/4" | 28" | 40 1/4" | 4" DIA. | 7" DIA. | 20" | 20 3/4" |

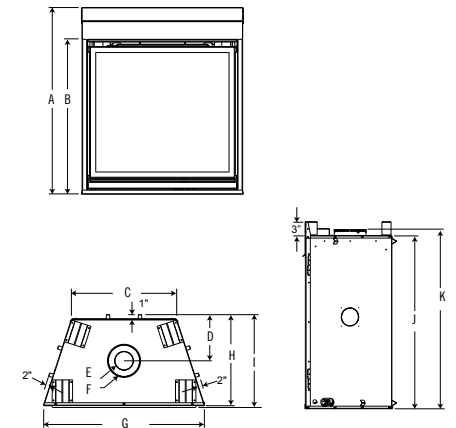


## CHDX40-2

### Features & Benefits

- 1008 sq. in. glass area
- 54% flame/heat adjustment for maximum comfort and efficiency
- Fuel saving electronic ignition with battery backup system and flex connector complete with shut off **\*standard\***
- Exclusive NIGHT LIGHT™ feature **\*standard\***
- Exclusive PHAZER™ log set and charcoal embers can be switched out with the river rock media tray with satin chrome decorative fender
- Optional decorative fronts available
- Four optional decorative panels to choose from
- Proflame II hand held remote control (controls flame, NIGHT LIGHT™ dimmer and blower) **\*standard\***
- Optional fan kit
- Approved for bedrooms, bathrooms, bed sitting rooms and mobile homes
- Standard as Natural Gas with LP Kit optional
- Optional media enhancement kits include Beach Fire and Mineral Rocks
- Power venting available to allow unique venting installations

|                              | CHDX40-1       |
|------------------------------|----------------|
| <b>BTU's (Input)</b>         | 40,000         |
| <b>Venting</b>               | Top<br>5" & 8" |
| <b>Glass Type</b>            | Ceramic        |
| <b>Glass Size</b>            |                |
| Height                       | 28"            |
| Width                        | 36"            |
| <b>Efficiencies</b>          |                |
| EnerGuide                    | 77.06%         |
| AFUE                         | 59.5%          |
| Steady State                 | 61.5%          |
| <b>Mobile Home Certified</b> | Yes            |



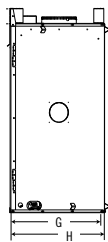
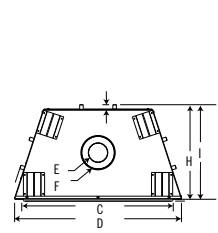
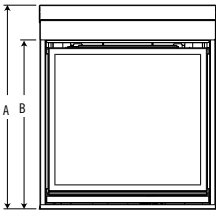
|          | A   | B       | C   | D       | E       | F       | G       | H   | I       | J   | K       |
|----------|-----|---------|-----|---------|---------|---------|---------|-----|---------|-----|---------|
| CHDX40-1 | 41" | 33 3/4" | 28" | 10 3/4" | 5" DIA. | 8" DIA. | 40 1/4" | 20" | 20 3/4" | 38" | 39 1/4" |

# CHD46

## Features & Benefits

- 1176 sq. in. glass area
- Up to 43% flame/heat adjustment for maximum comfort and efficiency
- Fuel saving electronic ignition with battery backup system and flex connector complete with shut off **\*standard\***
- Exclusive PHAZER<sup>™</sup> glowing log set with charcoal and glowing embers can be switched out with the optional river rock media tray
- Optional decorative fronts available
- Optional Sandstone brick panels or MIRRO-FLAME<sup>™</sup> Porcelain Reflective Radiant Panels
- Optional on/off and digital hand held remote controls
- Optional fan kit
- Approved for bedrooms, bathrooms, bed sitting rooms and mobile homes
- Standard as Natural Gas with LP Kit optional
- Optional media enhancement kits include Beach Fire and Mineral Rocks
- Power venting available to allow unique venting installations

|                              | CHD46          |
|------------------------------|----------------|
| <b>BTU's (Input)</b>         | 30,000         |
| <b>Venting</b>               | Top<br>4" & 7" |
| <b>Glass Type</b>            | Tempered       |
| <b>Glass Size</b>            |                |
| Height                       | 28"            |
| Width                        | 42"            |
| <b>Efficiencies</b>          |                |
| EnerGuide                    | 65.1%          |
| AFUE                         | 67.7%          |
| Steady State                 | 79.2%          |
| <b>Mobile Home Certified</b> | Yes            |



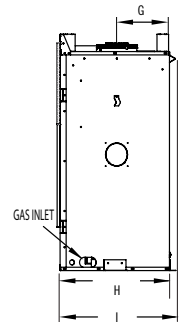
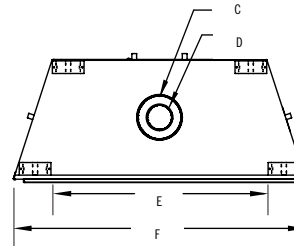
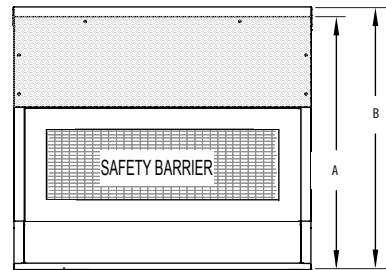
|       | A   | B       | C   | D       | E       | F       | G   | H       |
|-------|-----|---------|-----|---------|---------|---------|-----|---------|
| CHD46 | 41" | 33 3/4" | 34" | 36 1/4" | 4" DIA. | 7" DIA. | 20" | 20 1/2" |

# CLHD45

## Features & Benefits

- 728 sq. in. glass area
- Clean, contemporary design
- Fuel saving electronic ignition with battery backup system and flex connector complete with shut off **\*standard\***
- Heat resistant glass radiates heat back into the room
- Power venting is available to allow for unique venting installations
- Sparkling Topaz CRYSTALINE<sup>™</sup> glass ember bed **\*standard\***
- Optional basic, deluxe and premium four-sided surrounds come complete with safety barrier
- Optional MIRRO-FLAME<sup>™</sup> Porcelain Reflective Radiant Panels
- Optional Driftwood Log Set media enhancement kit comes with logs and river rocks
- Optional River Rock media kits can be added to or replace the existing CRYSTALINE<sup>™</sup> emberbed
- Optional colored glass media enhancement kits are available (black, blue, red, amber, clear and topaz)
- Optional on/off and digital hand held remote controls
- Optional fan kit
- Approved for bedrooms, bathrooms, bed sitting rooms and mobile homes
- Standard as Natural Gas with LP Kit optional
- Power venting available to allow unique venting installations

|                              | CLHD45         |
|------------------------------|----------------|
| <b>BTU's (Input)</b>         | 24,000         |
| <b>Venting</b>               | Top<br>4" & 7" |
| <b>Glass Type</b>            | Tempered       |
| <b>Glass Size</b>            |                |
| Height                       | 17 13/16"      |
| Width                        | 40 7/8"        |
| <b>Efficiencies</b>          |                |
| EnerGuide                    | 52%            |
| AFUE                         | -              |
| Steady State                 | 72%            |
| <b>Mobile Home Certified</b> | Yes            |



|        | A       | B         | C       | D       | E       | F       | G       | H       | I       |
|--------|---------|-----------|---------|---------|---------|---------|---------|---------|---------|
| CLHD45 | 39 3/8" | 40 11/16" | 7" DIA. | 4" DIA. | 34 1/4" | 46 1/4" | 10 1/4" | 18 1/4" | 19 1/4" |



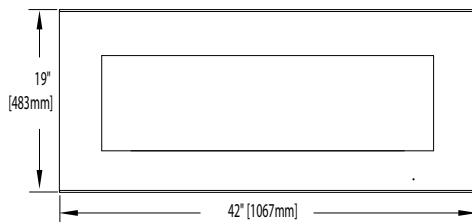


## CEFL42H

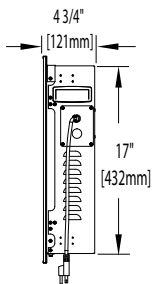
### Features & Benefits

- 5,000 BTU's and 1,500 Watts
- Simply plugs into a 120V wall outlet
- Paintable cord cover included (covers cord and can be painted to blend in with existing décor)
- Ultra slim design, 4 5/8" depth makes it one of the slimmest wall mounts in the industry
- Glass ember bed accents the flame
- Flame choice of blue or orange and a mixture inbetween
- Convenient remote control (controls flame intensity, flame color option, blower, heat output and timer)
- High Power LED lights provide day or night intensity and require no servicing
- Easy access manual on/off switch
- Easy installation with a built-in mounting bracket... simply hang, plug and play
- Suitable for any room including bedrooms, bed sitting rooms and mobile homes

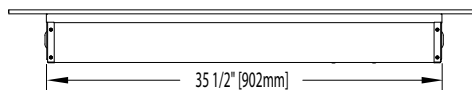
FRONT VIEW



SIDE VIEW



TOP VIEW

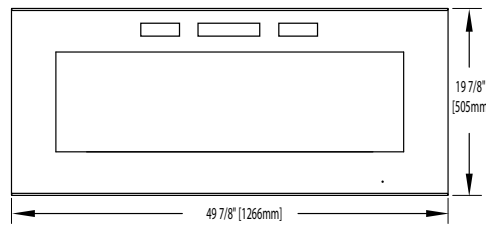


## CEFL50H

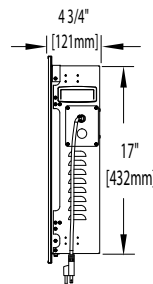
### Features & Benefits

- 5,000 BTU's and 1,500 Watts
- Simply plugs into a 120V wall outlet
- Features front vents within the sleek design
- Can be partially recessed into the wall
- Ultra slim design, 4 5/8" depth makes it one of the slimmest wall mounts in the industry
- Paintable cord cover included (covers cord and can be painted to blend in with existing décor)
- Crystal clear cube ember bed accents the flame
- Feature the option of both blue or orange flame, or a combination of both
- Convenient remote control (controls flame intensity, flame color option, blower, heat output and timer)
- High Power LED lights provide day or night intensity and require no servicing
- Easy access manual on/off switch
- Easy installation with a built-in mounting bracket... simply hang, plug and play
- Suitable for any room including bedrooms, bed sitting rooms and mobile homes

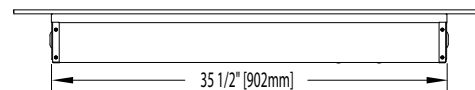
FRONT VIEW



SIDE VIEW



TOP VIEW

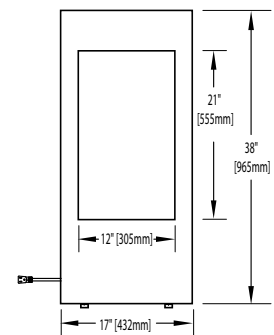


## CEFV38H

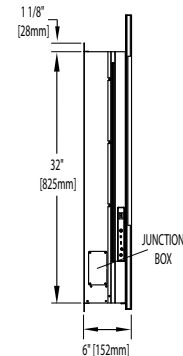
### Features & Benefits

- 5,110 BTU's and 1,500 Watts
- Can be plugged in or hardwired 120V
- Paintable cord cover included (covers cord and can be painted to blend in with existing décor)
- Controlled heater provides abundant warmth for up to 400 sq. ft
- Back lit NIGHT LIGHT™ creates ambient lighting and can be placed on three different color options; blue, pink or orange
- Glass CRYSTALINE™ ember bed accents the flame and can be switched between blue, pink or orange
- Convenient remote control (controls flame intensity, ember bed color option, blower, heat output and timer)
- Easy installation with a built-in mounting bracket... simply hang, plug and play. Or recess it into the wall
- Suitable for essentially any room including bedrooms, livingrooms, kitchens and mobile homes

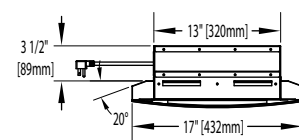
FRONT VIEW



SIDE VIEW



TOP VIEW





**QUALITY PROMISE**

All Continental® products are built to the strictest quality standards and only the highest grade materials are used. The computerized production processes, pride in workmanship and serious commitment to our achieved ISO9001-2008 certification, ensure many years of dependable performance.

**VERSATILE INSTALLATION**

Install in your home above or below grade, in any room even in bedrooms, bathrooms and kitchens. Direct vent models can be vented up to 20 feet horizontally through a wall, 40 feet vertically through the roof or below grade with a periscope. For all direct vent fireplaces we offer the smallest, architecturally pleasing vent terminal in the industry.

**MAXIMUM EFFICIENCY**

Our sealed combustion technology in our direct vent models uses outside air for combustion eliminating heat loss and cold drafts associated with conventional fireplaces. All Continental® models are designed to maximize efficiency levels with special heat retaining components.

**CONVENIENCE**

If all the conveniences of gas fireplaces aren't enough, enjoy full relaxation with Continental's remote controls. Available with an easy-to-read backlit digital readout of the room temperature and includes a child proof safety lock.

**A RELIABLE ECONOMICAL HEATING SOURCE**

Continental® products can save home heating costs by as much as 30% (Zone Heating by heating the rooms you use most) and provide reliable heat during power failures. No power? No problem! Continental's built-in millivolt system or electronic ignition with battery back-up requires no electricity to light or operate.

**SAFETY FEATURES**

100% SAFE GUARD™ gas control system automatically and quickly shuts off the gas supply for your peace of mind.

**HEAT TRANSFERRING CERAMIC GLASS**

Ceramic glass provides an excellent temperature transfer allowing maximum heat to radiate into the room. Some models use heat resistant tempered glass.

**REALISTIC CERAMIC FIBRE LOGS**

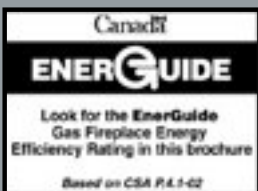
Continental's configuration of realistic logs create a cozy and natural wood burning atmosphere.

**RELIABLE BURNER SYSTEM & ADJUSTABLE FLAME**

Our advanced YELLOW DANCING FLAMES™ provide maximum heat and flame pattern. For less heat, simply reduce the input with the built-in flame/heat adjustment for maximum comfort and efficiency.

**ENVIRONMENTALLY FRIENDLY**

Clean burning, convenient natural gas or propane provides an environmentally safe energy source - indoors and outdoors. Continental® products are designed to provide an environmentally friendly energy source.



ENERGUIDE - A Canadian efficiency standard based on frequent, short start-up and cool-down cycles. All appliances sold in Canada are subject to this EnerGuide rating system. AFUE - A US efficiency standard (Department of Energy) based on extended on/off cycles, more typical of fireplace usage. STEADY STATE - Reflects the highest possible overall heating efficiency. Years of research, design and testing have enhanced optimum performance allowing Continental® products to achieve some of the highest heater rating efficiencies on the market. Our products continuously surpass industry standards not only in appearance but in efficiency and performance.

Consult your owner's manual for complete installation instructions, accurate framing dimensions and proper clearances to combustible materials. Installations shown may not be accurate to code. Check all local and national building codes and gas regulations. Products may not be exactly as shown. Flame height and activity is influenced by varying vent configurations and may not appear as shown. All specifications are subject to change without prior notice due to on-going product improvements. BTU's listed in brochure reflect natural gas applications. Continental® is a registered trademark of Wolf Steel Ltd. © Wolf Steel Ltd.



- 103 Miller Drive, Crittenden, Kentucky, USA 41030
- 24 Napoleon Road, Barrie, Ontario, Canada L4M 0G8
- 7200 Trans Canada Highway, Montreal, Quebec, Canada H4T 1A3

Tel: (705) 721-1212 Fax: (705) 722-6031  
continentalfireplaces.com



Authorized Dealer

