

NAPOLEON®

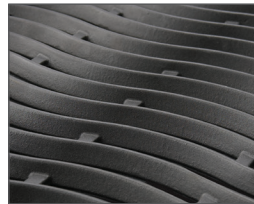
GRILLS



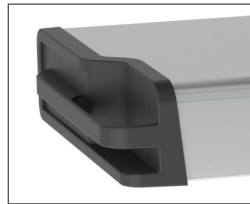
GAS GRILL LEGEND

Up to 74,500 BTU's
6 Burners
Cooking Area: 740 in²

LD485RSIB



Porcelainized Cast Iron
WAVE™ Cooking Grids



Integrated Condiment
Holders



Rear Infrared
Rotisserie Burner



Infrared SIZZLE ZONE™
Side Burner

- Rear infrared rotisserie burner
- Infrared SIZZLE ZONE™ side burner
- 4 Stainless steel tube burners
- Porcelainized cast iron WAVE™ cooking grids
- Double walled stainless steel lid
- Stainless steel side shelves with integrated condiment holders
- JETFIRE™ ignition system

