

SPECIFICATIONS

	BILEX730RBI	BILEX605RBI	BILEX485RBI
Double walled stainless steel lid	S	S	S
ACCU-PROBE™ temperature gauge	S	S	S
Total cooking surfaces (cm)	46 x 102	46 x 85	46 x 68
JETFIRE™ ignition	S	S	S
Rear burner igniter	S	S	S
Infrared ceramic bottom burners	1	1	1
Stainless steel bottom burners	4	3	2
Ceramic infrared rear rotisserie burner	1	1	1
Stainless steel WAVE™ cooking grids	S	S	S
Cast Iron WAVE™ cooking griddle plate	S	S	S
EASY SET™ control knobs	S	S	S
iGlow™ backlit control knobs	S	S	S
Removable front drip pan	S	S	S
Warming rack	S	S	S
President's Limited Lifetime Warranty	S	S	S

DIMENSIONS

	BILEX730RBI	BILEX605RBI	BILEX485RBI
Total length (cm)	110	93	76
Total width (cm)	54	54	54
Total height (cm) lid closed/ lid open	19/45	19/45	19/45

S = standard

MODULAR CABINET COMPONENTS

	PART NUMBER	WIDTH cm.	DEPTH cm.	HEIGHT cm.
Under Grill Cabinet 485 Series	UGC-485	86	710	90.5
Under Grill Cabinet 605 Series	UGC-605	103	710	90.5
Under Grill Cabinet 730 Series	UGC-730	120	710	90.5
Universal Cabinet (with end panel)	SC-UNI	66	710	90.5
Universal Cabinet (without end panel)	SC-UNI	61	710	90.5
Drawer Kit (3 drawers for SC-UNI)	SC-DK			
Door/Shelf & Separation Plate for SC-UNI	SC-SK			
Cabinet 45 Connection	SC-45T	47		90.5
Side Burner	N370-0504/05	38	45.6	11
Sink	SC-SINK	37.5	42	19
Propane Tank Slider	SC-PTK			
Standard Granite for SC-UNI	GT-01	712	712	1.5
- With Hole for Sink or Side Burner	GT-02	712	712	1.5
Granite Top for Extra add on SC-UNI	GT-03	610	712	1.5
Granite Top for add-on cabinet	GT-04	660	712	1.5
- With Hole for Sink or Side Burner	GT-05	660	712	1.5
Granite Top for 90° Connection	GT-06	712	760	1.5
Granite Top for 45° Connection Left	GT-07		712	1.5
Granite Top for 45° Connection Right	GT-08		712	1.5
Granite Strip for back of UGC-485	GS-485	76	16	1.5
Granite Strip for back of UGC-605	GS-605	92.6	16	1.5
Granite Strip for back of UGC-730	GS-730	109.7	16	1.5



Exim International (Australia) Pty Ltd
24 Harrington Street,
Arundel Industrial Park
Arundel, Queensland
Australia 4214

Ph: +61 (07) 5630 6837
Email: info@napoleongrills.com.au

napoleongrills.com.au

Authorized Dealer



ADBRL-EX 09/2015

Built-in Heads and Side Burner approved by Intertek Testing Services to CE standard EN498 or to SAI standard AS 4557:2004/AS 2658:2008 (pending 2014). All specifications and designs are subject to change without prior notice due to ongoing product improvements. Consult your owner's manual for complete installation and operating instructions and check all local and national Building Codes and Regulations. Not all features available on all models. Napoleon® is a registered trademark of Wolf Steel Ltd. Images and colors may not be exactly as shown.

NAPOLEON.COM

OUTDOOR KITCHENS

EXPERTS IN GAS & INFRARED GRILLING



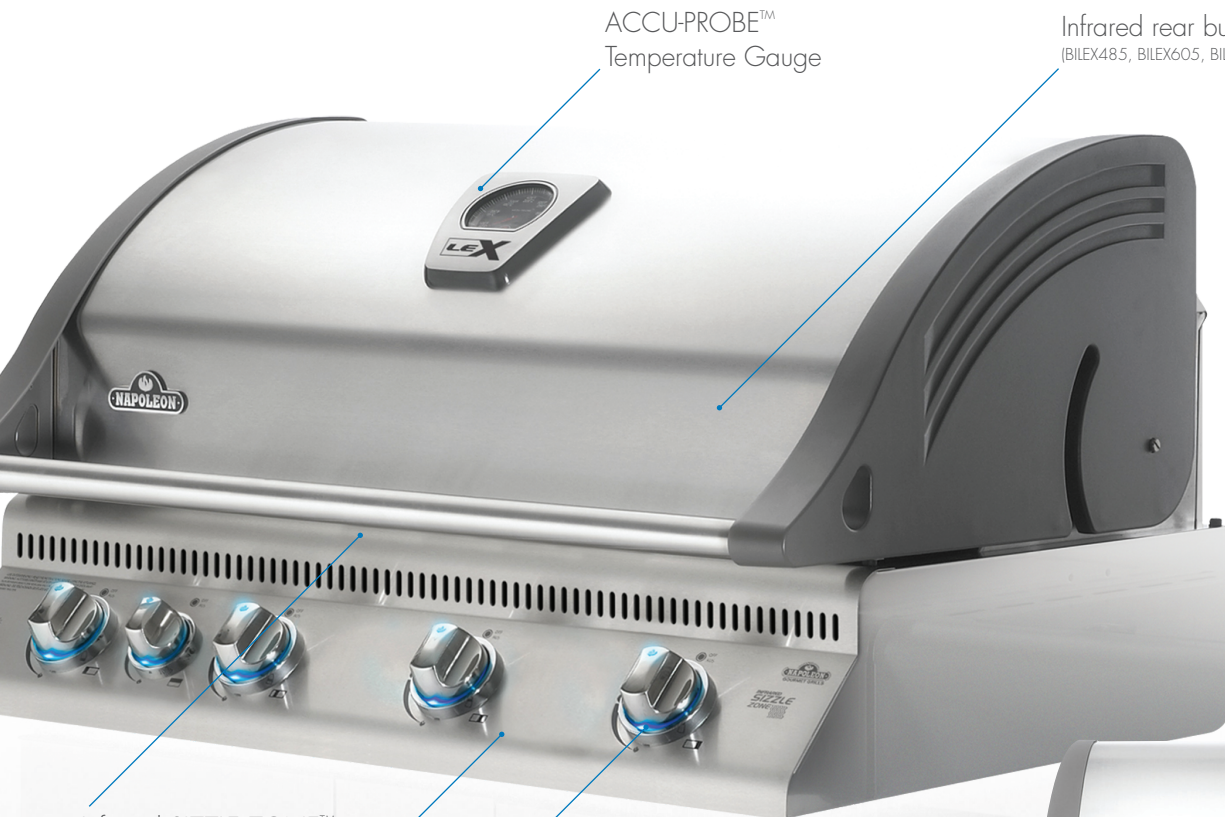
BUILT-IN BILEX SERIES

304 Grade Stainless Steel



BUILT-IN GRILL HEADS

4, 5, OR 6 BURNERS FOR YOUR OUTDOOR KITCHEN



ACCU-PROBE™
Temperature Gauge

Infrared rear burner
(BILEX485, BILEX605, BILEX730)

Infrared SIZZLE ZONE™
bottom burner
(BILEX485, BILEX605, BILEX730)

Engaging i-GLOW™ backlit control
knobs for late night entertaining



BILEX485 4 BURNERS

Up to 60,000 BTU's combined
76cm x 54cm x 19cm
Cooking Area 46cm x 68cm



BILEX730 6 BURNERS

Up to 95,700 BTU's combined
110cm x 54cm x 19cm
Cooking Area 46cm x 102cm

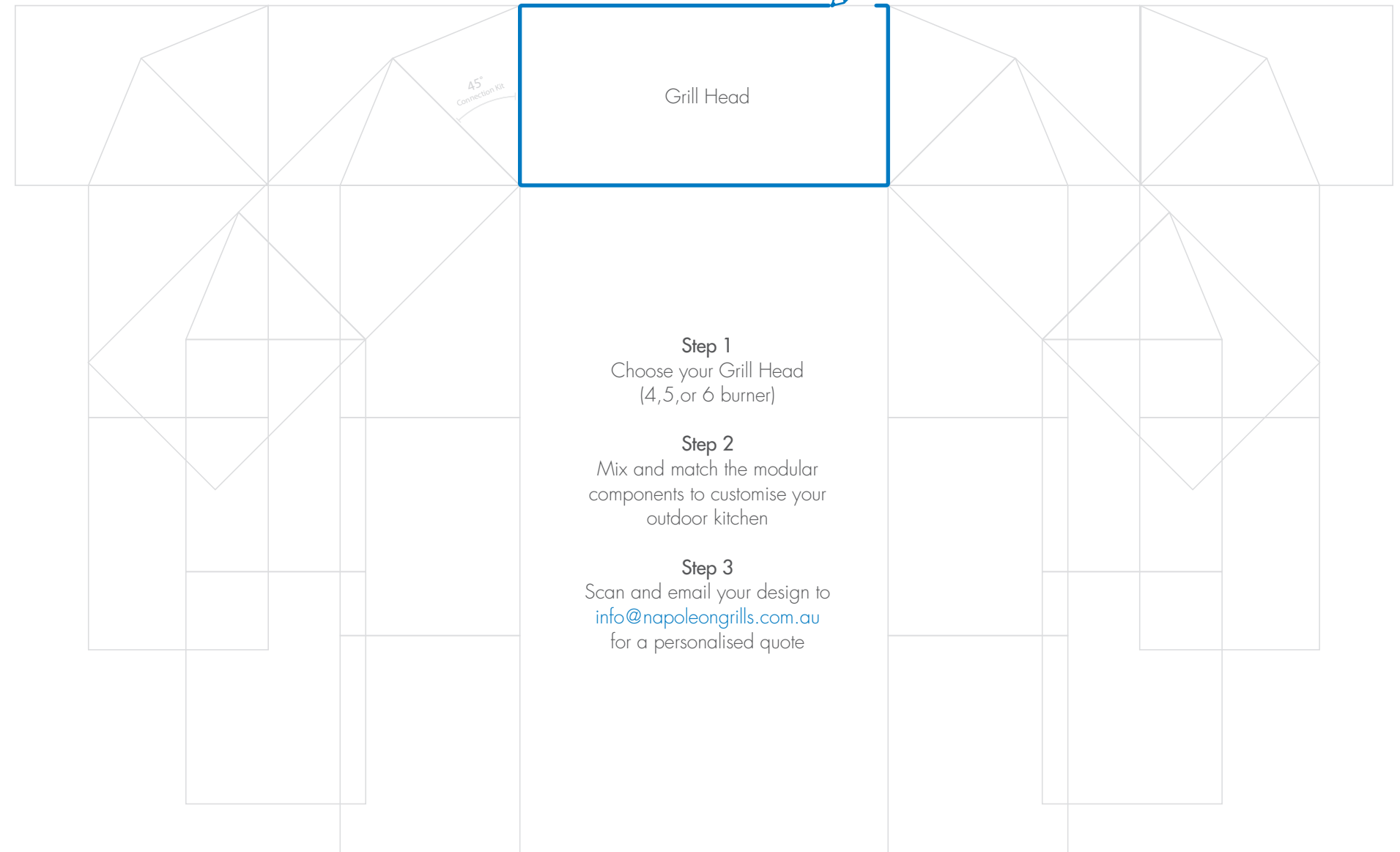
BILEX605 5 BURNERS

Up to 79,000 BTU's combined
93cm x 54cm x 19cm
Cooking Area 46cm x 85cm

DESIGN YOUR OWN

USE THE TEMPLATE TO CUSTOM DESIGN YOUR OWN OUTDOOR KITCHEN SET-UP

Please use a bold pen or marker to outline your custom design, and be sure to specify what components you wish to include.



MODULAR KITCHEN PARTS

	MODULE	DESCRIPTION	QTY	SUBSTITUTE	DESCRIPTION	QTY	NOTES
MODULAR 200	UGC-605 *	Under Grill Cabinet 605	1	-	-	-	* Other size built in's can be substituted (BILEX485 or 730). Make sure the under grill cabinet (UGC) and back granite strip (GS) correspond to the unit. ** Propane Tank Slider is Not required for Natural Gas Application.
	BILEX605RBIP *	BILEX 605 Built in LPG	1	BILEX 605RBIN	BILEX 605 Built in Natural Gas	1	
	SC-UNI	Universal Cabinet	2	-	-	-	
	SC-SK	Shelf & Door Kit	1	-	-	-	
	SC-DK	Drawer Kit	1	SC-SK	Shelf & Door Kit	1	
	SC-SINK	Stainless Steel Sink with Hot & Cold Mixer	1	N370-0504/5	Side Burner LPG or Natural Gas	1	
	SC-45T	45 Degree Connection Kit	2	-	-	-	
	SC-PTK **	Propane Tank Slider	1	-	-	-	
	GT-04	712 x 660mm Granite Top	1	-	-	-	
	GT-05	712 x 660mm Granite Top with cut out	1	-	-	-	
GS-605 *	Back Granite Strip for UGC-605	1	-	-	-		
GT-07	45 Degree Granite Left Side	1	-	-	-		
GT-08	45 Degree Granite Right Side	1	-	-	-		
MODULAR 100	UGC-730 *	Under Grill Cabinet 730	1	-	-	-	* Other size built in's can be substituted (BILEX485 or 605). Make sure the under grill cabinet (UGC) and back granite strip (GS) correspond to the unit. ** Propane Tank Slider is Not required for Natural Gas Application. *** Side Burner Can be substituted with the Sink SC-SINK
	BILEX730RBIP *	BILEX 730 Built in LPG	1	BILEX 730RBIN	BILEX 730 Built in Natural Gas	1	
	SC-UNI	Universal Cabinet	2	-	-	-	
	SC-SK	Shelf & Door Kit	1	-	-	-	
	SC-DK	Drawer Kit	1	SC-SK	Shelf & Door Kit	1	
	N370-504 ***	Side Burner LPG (Propane)	1	N370-0505	Side Burner Natural Gas	1	
	SC-PTK **	Propane Tank Slider	1	-	-	-	
	GT-01	712 x 712mm Granite Top	1	-	-	-	
	GT-02	712 x 712mm Granite Top with cut out	1	-	-	-	
	GS-730 *	Back Granite Strip for UGC-730	1	-	-	-	
MODULAR 300	UGC-730 *	Under Grill Cabinet 730	1	-	-	-	* Other size built in's can be substituted (BILEX485 or 730). Make sure the under grill cabinet (UGC) and back granite strip (GS) correspond to the unit. ** Propane Tank Slider is Not required for Natural Gas Application.
	BILEX730RBIP *	BILEX 730 Built in LPG	1	BILEX 730RBIN	BILEX 730 Built in Natural Gas	1	
	SC-UNI	Universal Cabinet	3	-	-	-	
	SC-SK	Shelf & Door Kit	2	-	-	-	
	SC-DK	Drawer Kit	1	SC-SK	Shelf & Door Kit	1	
	N370-0504	Side Burner LPG (Propane)	1	N370-0505	Side Burner Natural Gas	1	
	SC-SINK	Stainless Steel Sink with Hot & Cold Mixer	1	-	-	-	
	SC-45T	45 Degree Connection Kit	2	-	-	-	
	SC-PTK **	Propane Tank Slider	1	-	-	-	
	GT-02	712 x 712mm Granite Top with cut out	1	-	-	-	
	GT-04	712 x 660mm Granite Top	1	-	-	-	
	GS-730 *	Back Granite Strip for UGC-730	1	-	-	-	
	GT-05	712 x 660mm Granite Top with cut out	1	-	-	-	
	GT-06	712 x 760mm Granite Top	1	-	-	-	

OASIS MODULAR ISLAND COMPONENTS



Universal Cabinet
SC-UNI



Drawer Kit for Universal Side Cabinet
SC-DK



Door Kit for Universal Cabinet Shell
SC-SK



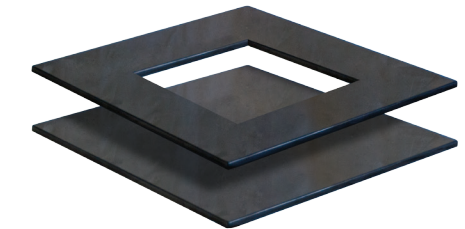
Stainless Steel Sink, 5 Star WELS
rated Hot/Cold mixing tap
SC-SINK



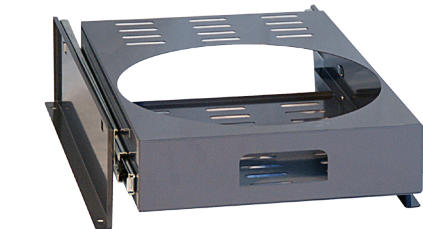
Cabinet Transition 45° Panel
SC-45T



Side Burner LPG (Propane or Natural Gas)
N370-504 Propane, N370-505 Natural Gas



Black Granite Top - Varying sizes and Shapes
GT01-08



LPG Gas Bottle Holder for Universal Side Cabinet
SC-PTK



Screwdriver Set
Tool kit Included with every SC-UNI